



CATALOG

2023

2023

TOOLS IN EVERY HOME



INTERTOOL
Tools in Every Home

AXES, MAULS, HAMMERS, AND ACCESSORIES



AXES



HT08-0261



HT08-0262



HT08-0263



HT08-0264



HT08-0274

MAULS



HT08-0273



HT08-0275

STORM Professional Line

– Built with quality materials and precision engineered for high performance results. Designed with an emphasis on ergonomics to make sure any user can enjoy the experience of handling these effective tools, no matter how long the task at hand may be.



HT08-0291



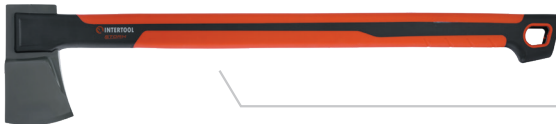
HT08-0292



HT08-0293



HT08-0296



HT08-0297



HT08-0298



HT08-0536



HT08-0553

AXES

MAULS



Protective Sheath

Locks the head securely for safe storing and features an easy-carry handle

Heavy Duty Carbon Steel

Lightweight and coated in PTFE non-stick material to prevent strike friction, corrosion, and rusting

Secure Head to Handle Connection

Special mending technique creates a stronger bond for increased durability

Lightweight Fiberglass Handle

3 component hollow configuration for decreased weight without sacrificing handle strength and increased grip with non-slip rubber

Shock Absorbing

Dampens vibrations to help absorb heavy impact

Large Hang Hole

For hanging and safe storage

Sharpened Precision Blade

Wedge-shaped and angled for cleaner cuts

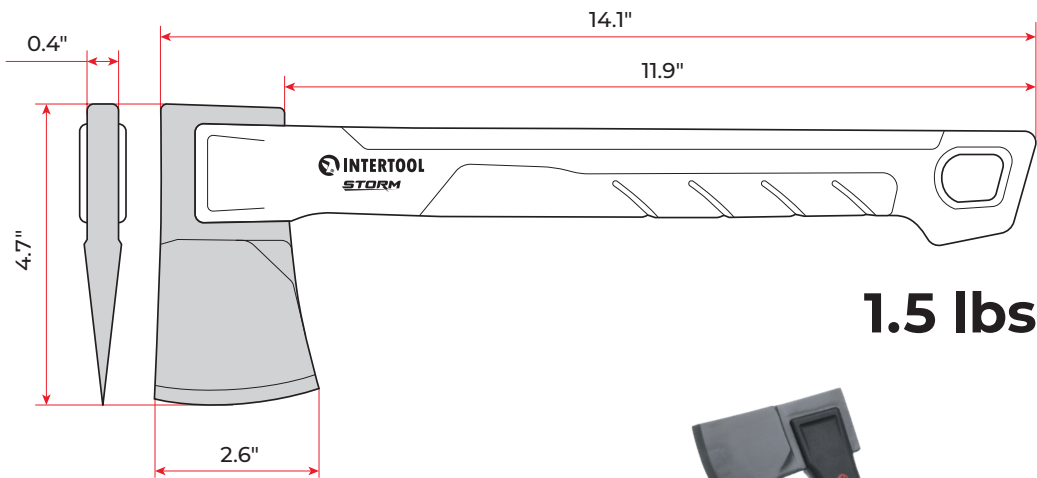


Description

Ultra-lightweight outdoor, camping, and survival hatchet. Carbon steel blade is coated in non-stick Teflon for reduced friction and excellent rust and corrosion resistance. Optimized for efficient wood-cutting with its precise 30-degree wedge shape. Handle is hollow, reducing weight and vibration while maintaining strength and durability. It is reinforced with strong, fracture and bend resistant polyamide, providing extra protection against breakage and bending. Grip-textured rubber ensures a secure, non-slip grip, and the ergonomic handle shape fits comfortably in hand. High visibility red coloring makes it easy to find, and the hang hole allows for convenient storage. Optimal head-to-handle weight balance increases strike force and leverage, making it perfect for tasks like kindling, branch and stick cutting, and splitting small rounds. When finished, just slide the blade into the included plastic sheath for safe storage and transport with its easy-carry handle. Take it with you wherever you go and enjoy the reliability and versatility of the ultimate outdoor companion.

Specifications:

- Type: **Lightweight Chopping Hatchet**
- Head material: **Carbon Steel**
- Handle material: **Polyamide, Fiberglass, and Thermoplastic Rubber**
- Total length: **14 inches**
- Handle length: **11.9 inches**
- Blade width: **2.6 inches**
- Total weight: **1.5 lbs**



1.5 lbs



AXE | HT08-0292

STORM
Professional Line



Protective Sheath

Locks the head securely for safe storing and features an easy-carry handle

Heavy Duty Carbon Steel

Lightweight and coated in PTFE non-stick material to prevent strike friction, corrosion, and rusting

Secure Head to Handle Connection

Special mending technique creates a stronger bond for increased durability

Lightweight Fiberglass Handle

3 component hollow configuration for decreased weight without sacrificing handle strength and increased grip with non-slip rubber

Shock Absorbing

Dampens vibrations to help absorb heavy impact

Sharpened Precision Blade

Wedge-shaped and angled for cleaner cuts

Large Hang Hole

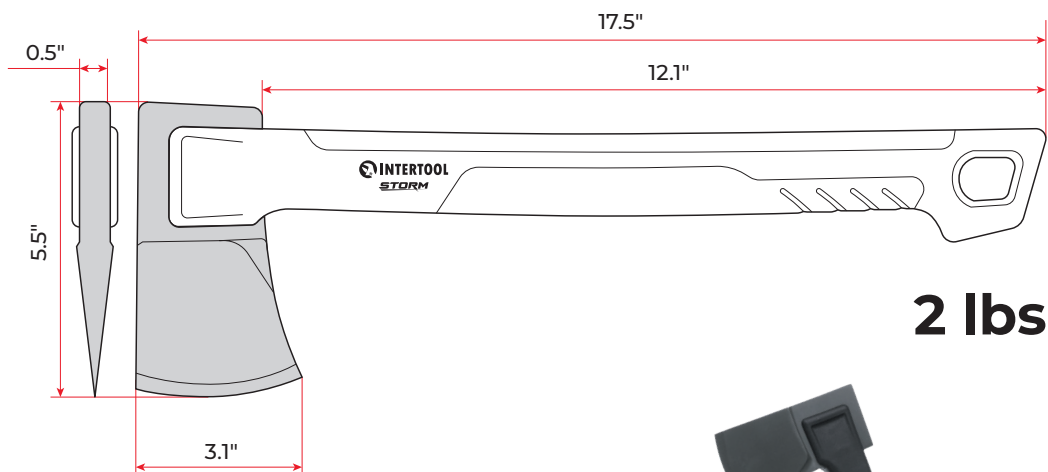
For hanging and safe storage

Description

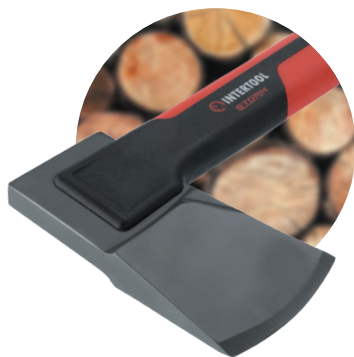
Ultra-lightweight, heavy-duty hatchet with longer profile and heavier head out of the two STORM hatchets we offer. Carbon steel blade is coated in non-stick Teflon for reduced friction and excellent rust and corrosion resistance. Optimized for efficient wood-cutting with its precise 30-degree wedge shape. Handle is hollow, reducing weight and vibration while maintaining strength and durability. It is reinforced with strong, fracture and bend resistant polyamide, providing extra protection against breakage and bending. Grip-textured rubber coating ensures a secure, non-slip grip, and the ergonomic handle shape fits comfortably in your hand. High visibility red coloring makes it easy to find, and hang hole allows for convenient storage. Optimal head-to-handle weight balance increases strike force and leverage, making it perfect for tasks like kindling, branch and stick cutting, and splitting small rounds. When you're finished, just slide the blade into the included plastic sheath for safe storage and transport with its easy-carry handle. Take it with you wherever you go and enjoy the reliability and versatility of the ultimate outdoor companion.

Specifications:

- Type: **Heavy Duty Chopping Hatchet**
- Head material: **Carbon Steel**
- Handle material: **Polyamide, Fiberglass, and Thermoplastic Rubber**
- Total length: **18 inches**
- Handle length: **12.1 inches**
- Blade width: **3.1 inches**
- Total weight: **2 lbs**



2 lbs



AXE | HT08-0293

STORM
Professional Line



Protective Sheath

Locks the head securely for safe storing and features an easy-carry handle

Heavy Duty Carbon Steel

Lightweight and coated in PTFE non-stick material to prevent strike friction, corrosion, and rusting

Secure Head to Handle Connection

Special mending technique creates a stronger bond for increased durability

Lightweight Fiberglass Handle

3 component hollow configuration for decreased weight without sacrificing handle strength and increased grip with non-slip rubber

Shock Absorbing

Dampens vibrations to help absorb heavy impact

Sharpened Precision Blade

Wedge-shaped and angled for cleaner cuts

Large Hang Hole

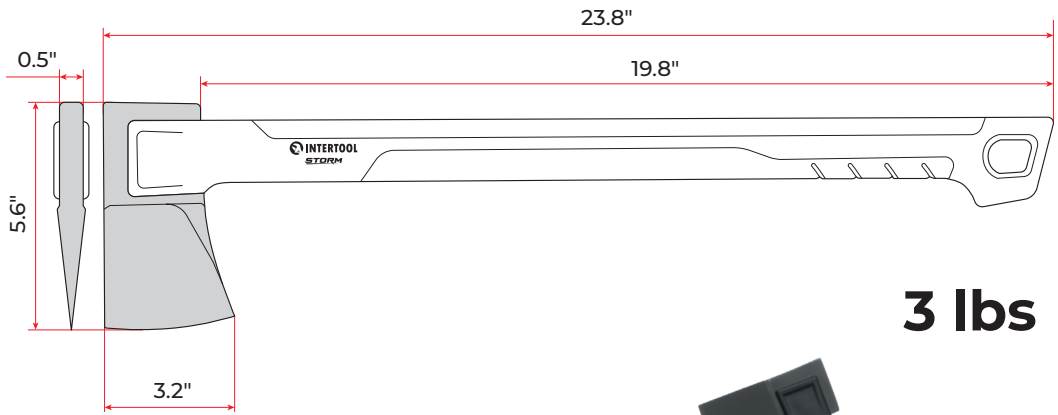
For hanging and safe storage

Description

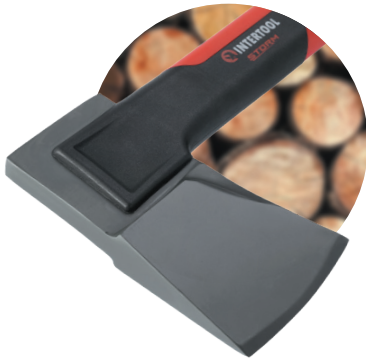
Heavy-duty felling axe with mid-sized profile for a more powerful and versatile performance, surpassing that of traditional hatchets. Carbon steel blade coated in non-stick Teflon for reduced friction and excellent rust and corrosion resistance. Precise 30-degree wedge shape optimized for efficient wood-cutting. Handle is hollow, reducing weight and vibration while maintaining strength and durability. Reinforced with strong, fracture and bend resistant polyamide for extra protection against breakage and bending. Grip-textured rubber coating ensures secure, non-slip grip, and ergonomic handle shape fits comfortably in hand. High visibility red coloring makes it easy to find, and hang hole allows for convenient storage. Optimal head-to-handle weight balance increases strike force and leverage, perfect for tasks like kindling, branch and stick cutting, and splitting small rounds. When finished, just slide blade into included plastic sheath for safe storage and transport with easy-carry handle. Take it with you wherever you go and enjoy reliability and versatility of ultimate outdoor companion.

Specifications:

- Type: **Mid-Size Felling Axe**
- Head material: **Carbon Steel**
- Handle material: **Polyamide, Fiberglass, and Thermoplastic Rubber**
- Total length: **23.8 inches**
- Handle length: **19.8 inches**
- Blade width: **3.2 inches**
- Total weight: **3 lbs**



3 lbs





Protective Sheath

Locks the head securely for safe storing and features an easy-carry handle

Secure Head to Handle Connection

Special mending technique creates a stronger bond for increased durability

Heavy Duty Carbon Steel

Lightweight and coated in PTFE non-stick material to prevent strike friction, corrosion, and rusting

Lightweight Fiberglass Handle

3 component hollow configuration for decreased weight without sacrificing handle strength and increased grip with non-slip rubber

Shock Absorbing

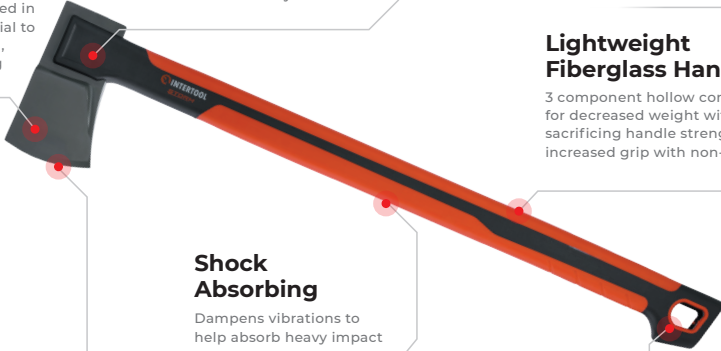
Dampens vibrations to help absorb heavy impact

Sharpened Precision Blade

Wedge-shaped and angled for cleaner cuts

Large Hang Hole

For hanging and safe storage

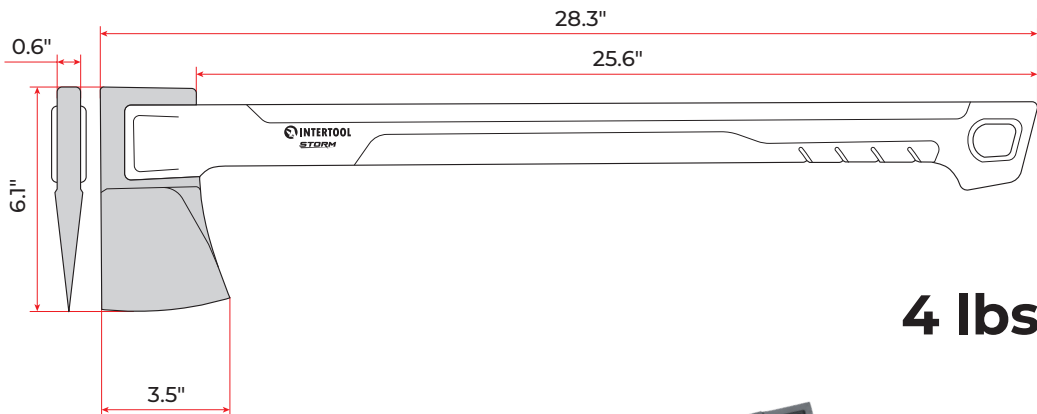


Description

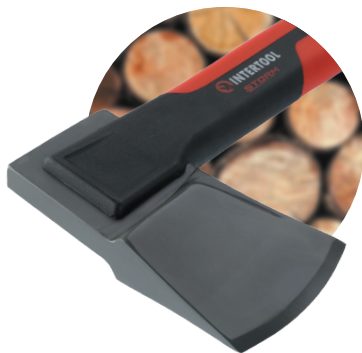
Heavy-duty full-size felling axe for ultimate chopping performance. Carbon steel blade coated in non-stick Teflon for reduced friction and excellent rust and corrosion resistance. Precise 30-degree wedge shape optimized for efficient wood-cutting. Handle is hollow, reducing weight and vibration while maintaining strength and durability. Reinforced with strong, fracture and bend resistant polyamide for extra protection against breakage and bending. Grip-textured rubber coating ensures secure, non-slip grip, and ergonomic handle shape fits comfortably in hand. High visibility red coloring makes it easy to find, and hang hole allows for convenient storage. Optimal head-to-handle weight balance increases strike force and leverage, perfect for tasks like kindling, branch and stick cutting, and splitting small rounds. When finished, just slide blade into included plastic sheath for safe storage and transport with easy-carry handle. Efficiency, comfort, and power meet in this ultimate chopping tool.

Specifications:

- Type: **Felling Axe**
- Head material: **Carbon Steel**
- Handle material: **Polyamide, Fiberglass, and Thermoplastic Rubber**
- Total length: **28.3 inches**
- Handle length: **25.6 inches**
- Blade width: **3.5 inches**
- Total weight: **4 lbs**



4 lbs





Protective Sheath

Locks the head securely for safe storing and features an easy-carry handle

Heavy Duty Carbon Steel

Lightweight and coated in PTFE non-stick material to prevent strike friction, corrosion, and rusting

Secure Head to Handle Connection

Special mending technique creates a stronger bond for increased durability

Lightweight Fiberglass Handle

3 component hollow configuration for decreased weight without sacrificing handle strength and increased grip with non-slip rubber

Larger Wedge Angle

Shaped for powerful one-strike splits

Shock Absorbing

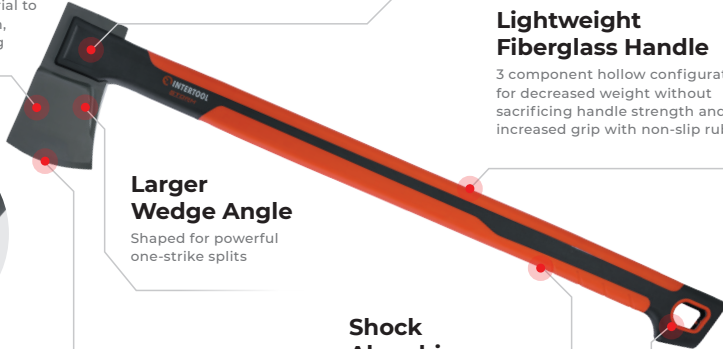
Dampens vibrations to help absorb heavy impact

Large Hang Hole

For hanging and safe storage

Sharpened Precision Blade

Wedge-shaped and angled for cleaner cuts

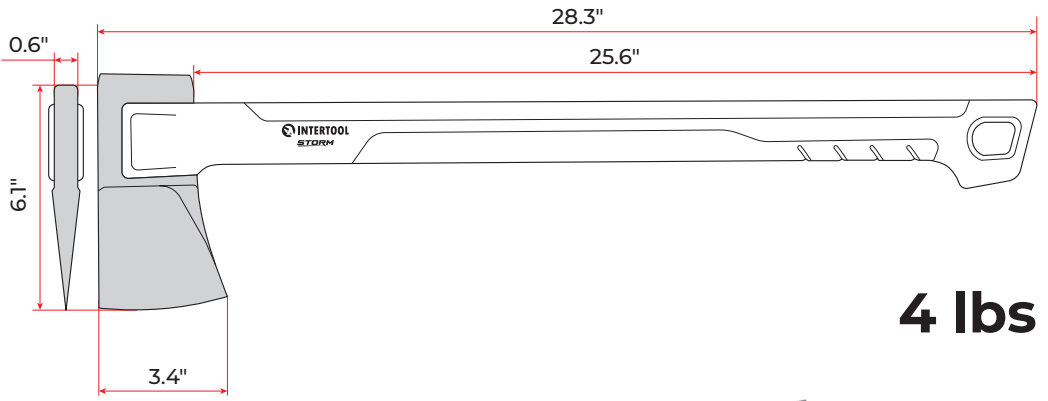


Description

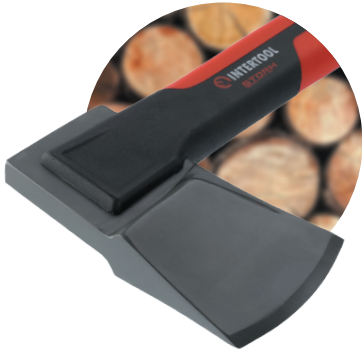
Heavy-duty, lightweight splitting maul. Carbon steel blade coated in non-stick Teflon for reduced friction and excellent rust and corrosion resistance. Precise 30-degree blade with widened wedge-shaped head is optimized for 1-strike splitting power. Handle is hollow, reducing weight and vibration while maintaining strength and durability. Reinforced with strong, fracture and bend resistant polyamide for extra protection against breakage and bending. Grip-textured rubber coating ensures secure, non-slip grip, and ergonomic handle shape fits comfortably in hand. High visibility red coloring makes it easy to find, and hang hole allows for convenient storage. Optimal head-to-handle weight balance increases strike force and leverage, perfect for tasks like kindling, branch and stick cutting, and splitting small rounds. When finished, just slide blade into included plastic sheath for safe storage and transport with easy-carry handle. Elevate your wood splitting experience with our precision maul, designed to maximize power while minimizing effort.

Specifications:

- Type: **Splitting Maul**
- Head material: **Carbon Steel**
- Handle material: **Polyamide, Fiberglass, and Thermoplastic Rubber**
- Total length: **28.3 inches**
- Handle length: **25.6 inches**
- Blade width: **3.4 inches**
- Total weight: **4 lbs**



4 lbs





Protective Sheath

Locks the head securely for safe storing and features an easy-carry handle

Heavy Duty Carbon Steel

Lightweight and coated in PTFE non-stick material to prevent strike friction, corrosion, and rusting

Secure Head to Handle Connection

Special mending technique creates a stronger bond for increased durability

Lightweight Fiberglass Handle

3 component hollow configuration for decreased weight without sacrificing handle strength and increased grip with non-slip rubber

Larger Wedge Angle and Surface Area

Shaped for powerful one-strike splits and tackling bigger rounds

Shock Absorbing

Dampens vibrations to help absorb heavy impact

Large Hang Hole

For hanging and safe storage

Sharpened Precision Blade

Wedge-shaped and angled for cleaner cuts

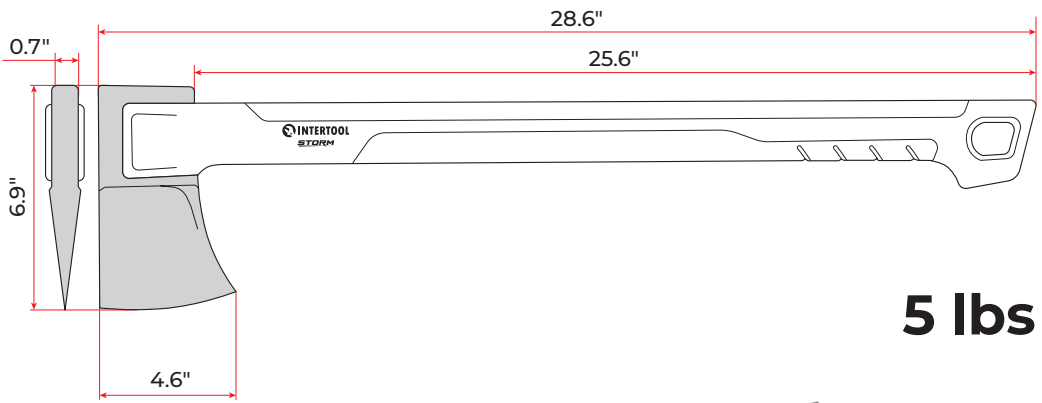


Description

Heavy-duty splitting maul. Carbon steel blade coated in non-stick Teflon for reduced friction and excellent rust and corrosion resistance. Precise 30-degree blade with widened wedge-shaped head is optimized for 1-strike splitting power. Handle is hollow, reducing weight and vibration while maintaining strength and durability. Reinforced with strong, fracture and bend resistant polyamide for extra protection against breakage and bending. Grip-textured rubber coating ensures secure, non-slip grip, and ergonomic handle shape fits comfortably in hand. High visibility red coloring makes it easy to find, and hang hole allows for convenient storage. Optimal head-to-handle weight balance increases strike force and leverage, perfect for tasks like kindling, branch and stick cutting, and splitting small rounds. When finished, just slide blade into included plastic sheath for safe storage and transport with easy-carry handle. The ultimate wood stacking splitting tool.

Specifications:

- Type: **Heavy-Duty Splitting Maul**
- Head material: **Carbon Steel**
- Handle material: **Polyamide, Fiberglass, and Thermoplastic Rubber**
- Total length: **28.3 inches**
- Handle length: **25.6 inches**
- Blade width: **4.6 inches**
- Total weight: **5 lbs**



5 lbs



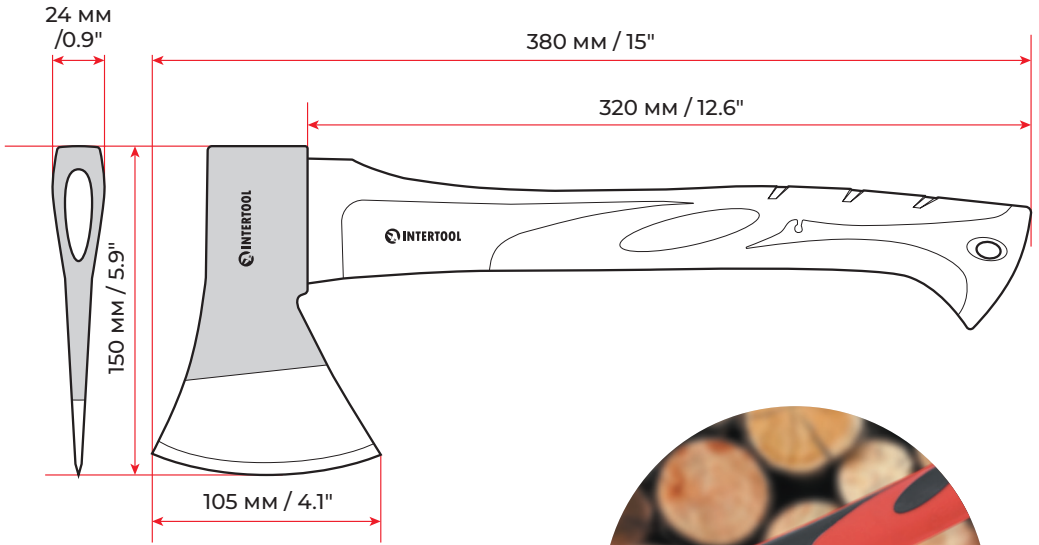


Description

Lightweight Design for easy carrying and effective chopping. Can be utilized for kindling, branch and stick cutting, splitting small rounds, and other outdoor tasks. Great for carrying along as a multi survival tool on hikes and camping trips. Blade is sharp out of the box and built with heavy duty steel. Features anti-corrosive coating on the head, keeping the tool safe from rust and wear. Includes a plastic blade protector for safe storage and transport. Sturdy fiberglass handle absorbs heavy impacts and has grip-textured rubber for a non-slip performance. Ergonomic handle shape fits comfortably in hand, features high visibility red coloring, and a hang hole for easy storing. Head-to-handle weight balance is optimal for increasing strike force and supports more leverage on every swing.

Specifications:

- Head material: **Tool steel**
- Handle material: **Fiberglass**
- Total length: **15 inches**
- Handle length: **12.6 inches**
- Blade width: **4.1 inches**
- Head weight: **1.3 lbs**
- Total weight: **2 lbs**



2 lbs

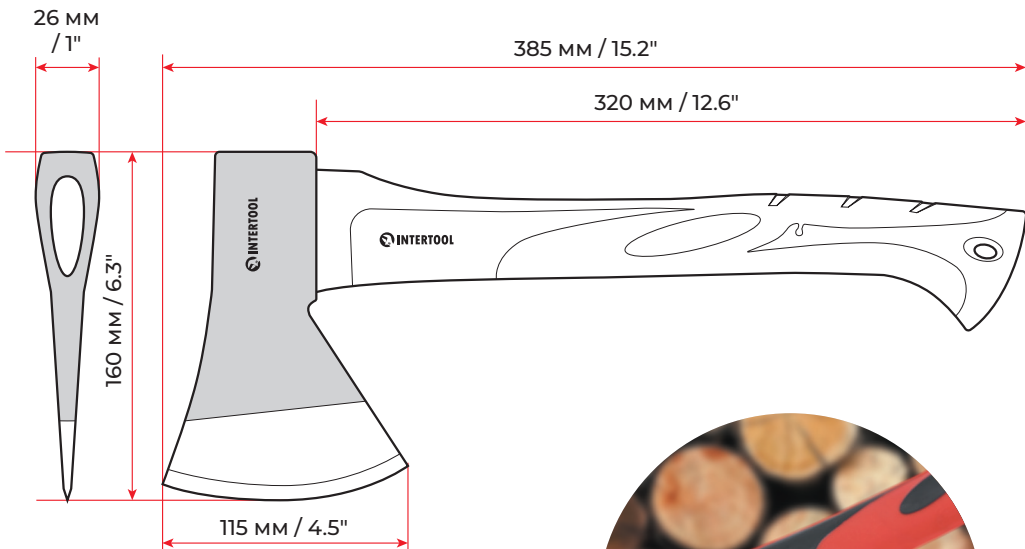


Description

Lightweight with a more effective head to handle weight distribution for an increased chopping performance. Can be utilized for kindling, branch and stick cutting, splitting small rounds, and other outdoor tasks. Great for carrying along as a multi survival tool on hikes and camping trips. Blade is sharp out of the box and built with heavy duty steel. Features anti-corrosive coating on the head, keeping the tool safe from rust and wear. Includes a plastic blade protector for safe storing and transport. Sturdy fiberglass handle absorbs heavy impacts and has grip-textured rubber for a non-slip performance. Ergonomic handle shape fits comfortably in hand, features high visibility red coloring, and a hang hole for easy storing.

Specifications:

- Head material: **Tool steel**
- Handle material: **Fiberglass**
- Total length: **15 inches**
- Handle length: **12.6 inches**
- Blade width: **4.5 inches**
- Head weight: **1.8 lbs**
- Total weight: **2.65 lbs**



2.65 lbs



Description

Lightweight with a medium sized profile for the best of both worlds in a chopping axe. Easily swing with either one or two hands with more leverage than a hatchet. Can be utilized for kindling, branch and stick cutting, splitting rounds, and other outdoor tasks. Great for packing in the vehicle for emergency situations or camping and hiking trips. Blade is sharp out of the box and built with heavy duty steel. Features anti-corrosive coating on the head, keeping the tool safe from rust and wear. Includes a plastic blade protector for safe storing and transport. Sturdy fiberglass handle absorbs heavy impacts and has grip-textured rubber for a non-slip performance. Ergonomic handle shape fits comfortably in hand, features high visibility red coloring, and a hang hole for easy storing. Head-to-handle weight balance is optimal for increasing strike force and supports more leverage on every swing.

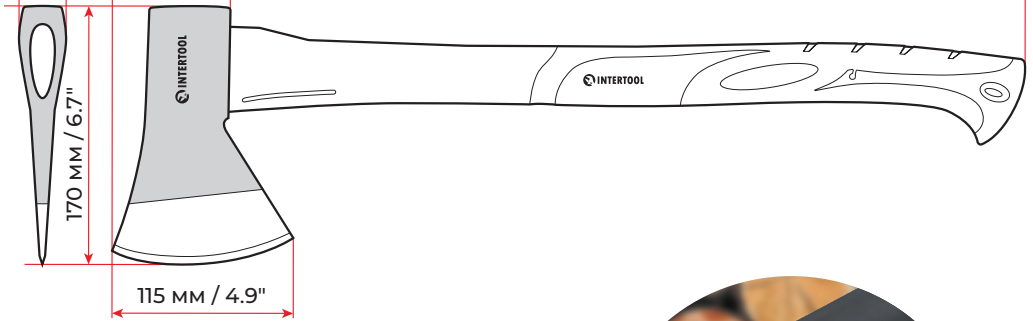
Specifications:

- Head material: **Tool steel**
- Handle material: **Fiberglass**
- Total length: **24 inches**
- Handle length: **20.8 inches**
- Blade width: **4.9 inches**
- Head weight: **2.2 lbs**
- Total weight: **3.65 lbs**

28 MM
/ 1.1"

610 MM / 24"

530 MM / 20.8"



3.65 lbs



Description

Full size felling axe for the most leverage and striking force when chopping trees or wood. Can be utilized for tree felling, kindling, branch and stick cutting, splitting rounds, and other outdoor or gardening tasks. Great for packing in the vehicle for emergency situations or camping trips. Blade is sharp out of the box and built with heavy duty steel. Features anti-corrosive coating on the head, keeping the tool safe from rust and wear. Includes a plastic blade protector for safe storing and transport. Sturdy fiberglass handle absorbs heavy impacts and has grip-textured rubber for a non-slip performance. Ergonomic handle shape fits comfortably in hands, features high visibility red coloring, and a hang hole for easy storing. Head-to-handle weight balance is optimal for increasing strike force and supports more leverage on every swing.

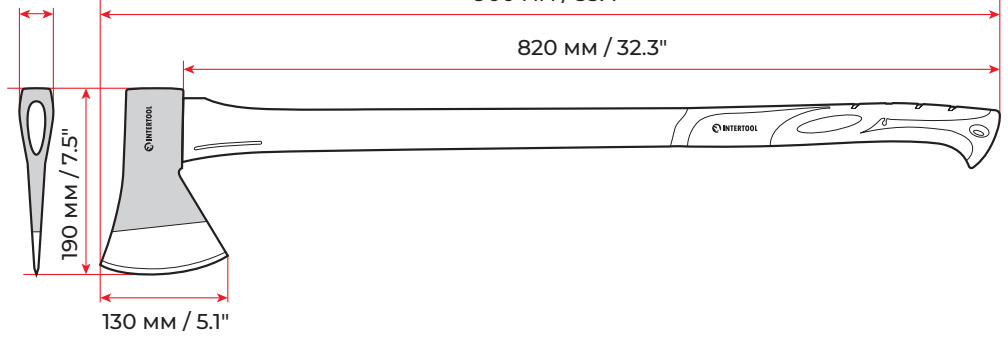
Specifications:

- Head material: **Tool steel**
- Handle material: **Fiberglass**
- Total length: **35.4 inches**
- Handle length: **32.3 inches**
- Blade width: **5.1 inches**
- Head weight: **2.8 lbs**
- Total weight: **4.8 lbs**

33 MM
/ 1.3"

900 MM / 35.4"

820 MM / 32.3"



4.8 lbs

MAULS | HT08-0273



Description

Built to deliver excellent striking force and control when splitting logs or heavy timber.

Great for firewood, landscaping and gardening, as well as demolition tasks.

Powerful convex maul head is forged from quality tool steel and features a flat poll to serve as a dual-purpose sledgehammer. Blade is pre-sharpened and includes a plastic blade protector for safe storing or transportation. Sturdy fiberglass handle effectively absorbs impact shock and features non-slip, textured rubber to ensure a firm and confident grip. Handle is brightly colored for quick identification when outdoors and includes a hang hole for easy storing.

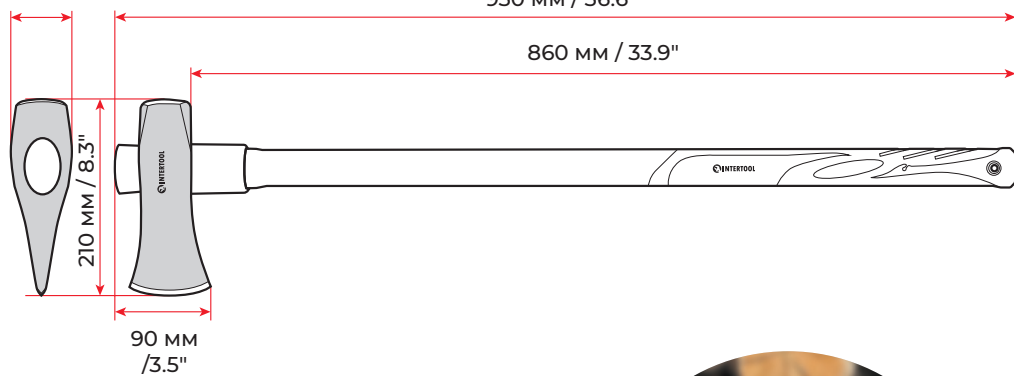
Specifications:

- Head material: **Tool steel**
- Handle material: **Fiberglass**
- Total length: **36.6 inches**
- Handle length: **34 inches**
- Blade width: **3.5 inches**
- Head weight: **6 lbs**
- Total weight: **8.35 lbs**

60 MM
/ 2.4"

930 MM / 36.6"

860 MM / 33.9"



8.35 lbs

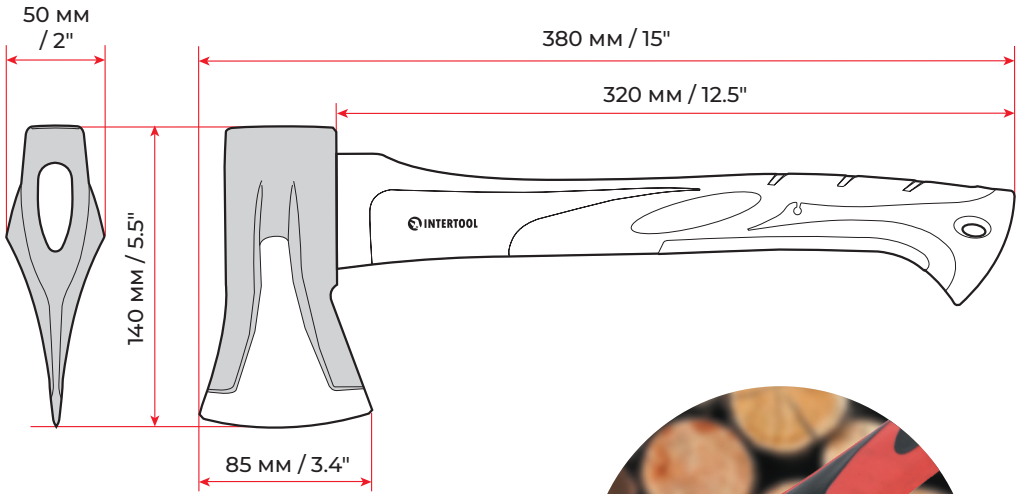


Description

Compact splitting maul design for outperforming a hatchet when splitting wood is your primary objective. Can be utilized for kindling, branch and stick cutting, splitting rounds, and other outdoor or gardening tasks. Great for carrying along as a multi survival tool on hikes and camping trips. Blade is sharp out of the box and built with heavy duty steel. Features anti-corrosive coating on the head, keeping the tool safe from rust and wear. Includes a plastic blade protector for safe storing and transport. Sturdy fiberglass handle absorbs heavy impacts and has grip-textured rubber for a non-slip performance. Ergonomic handle shape fits comfortably in hand, features high visibility red coloring, and a hang hole for easy storing. Head-to-handle weight balance is optimal for increasing one strike splits and supports more leverage on every swing.

Specifications:

- Head material: **Tool steel**
- Handle material: **Fiberglass**
- Total length: **15 inches**
- Handle length: **12.5 inches**
- Blade width: **3.4 inches**
- Head weight: **2.2 lbs**
- Total weight: **2.95 lbs**



2.95 lbs

MAULS | HT08-0275



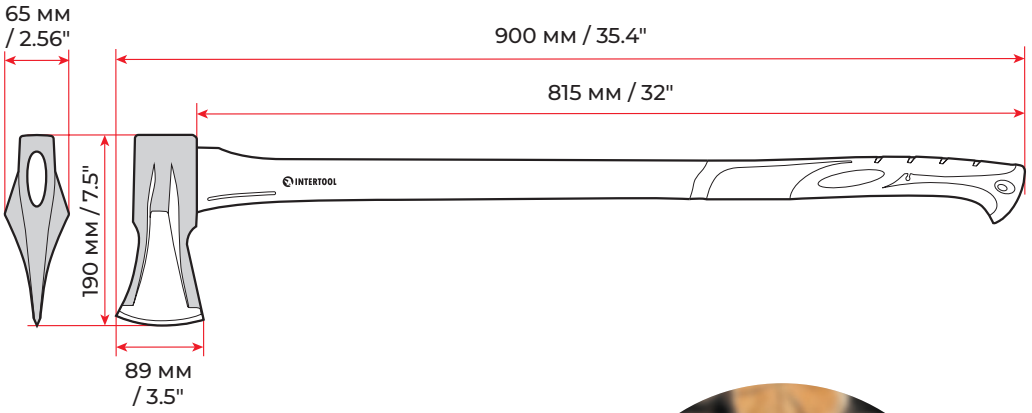
Description

Built to deliver excellent striking force and control when splitting logs or heavy timber at a lighter weight. Great for firewood, landscaping and gardening, as well as demolition tasks.

Powerful convex maul head is forged from quality tool steel and features a flat poll to serve as a dual-purpose sledgehammer. Blade is pre-sharpened and includes a plastic blade protector for safe storing or transportation. Sturdy fiberglass handle effectively absorbs impact shock and features non-slip, textured rubber to ensure a firm and confident grip. Handle is brightly colored for quick identification when outdoors and includes a hang hole for easy storing.

Specifications:

- Head material: **Tool steel**
- Handle material: **Fiberglass**
- Total length: **35.4 inches**
- Handle length: **32 inches**
- Blade width: **3.5 inches**
- Head weight: **5 lbs**
- Total weight: **6.6 lbs**



6.6 lbs





TOOLS IN EVERY HOME
STORM



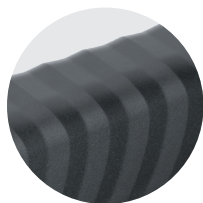
HT08-0553

STORM
Professional Line



Two Sharpening Modes

Designed to sharpen axes, mauls, and knives



Grooved Handle Grip

Makes it easy to hold when sharpening



Lightweight Body

Easy to transport without sacrificing durability



Ceramic Grinding Wheels

Wheels are angled and rotate as the blade passes through for better efficiency



Easy to Clean

Can be disassembled and washed under running warm water

Description

Multi-blade sharpener is designed to make it easy to sharpen axes, mauls, knives, and other blades. It features two separate angled slots, one for sharpening axes and mauls and another for sharpening knives and other blades. Body slides back and forth intuitively for the selection of axe or knife sharpening. The two selections are labeled with axe or knife icons. Suitable for both right- and left-handed users. Equipped with ceramic grinding wheels that rotate to allow for a fluid sharpening motion when running the blade edge through. Simply slide the blade edge back and forth through the sharpener to achieve the desired sharpness. The body of the sharpener is made from reinforced plastic, making it lightweight yet stable when in use. It can be placed on a flat, stable surface with its non-slip pads holding the tool securely or held in hand for on-the-go sharpening. The sharpener is easy to use and clean. Easily disassembles for cleaning and can be rinsed under warm water to remove any metal particles.

Specifications:

- Head material: **Axe and Knife Sharpener**
- Sharpening Material: **Ceramic**
- Sharpening Position: **Flat surface or in-hand**

HT08-0536

STORM
Professional Line



Included Sheath

Attaches to belt for quick access and protects exposure to the blade

Stainless Steel Blade

4-Inch fixed blade remains durable and rust resistant

Hang Hole

For hanging and safe storage

Sharpened Edge

Pre-sharpened and ready for use with any indoor or outdoor activity

Ergonomic Handle

Comfortable grip and shaped to prevent hands from slipping. Bright red color for easy identification



Description

This all-purpose knife is great for a variety of outdoor activities. It has a 4" stainless steel blade that is pre-sharpened and resistant to rust and corrosion. The handle is contoured for a comfortable grip and has a bright red color for easy identification. The knife comes with a plastic sheath to protect the blade and the user when not in use. The sheath can be attached to a belt or backpack for easy carrying and access.

Specifications:

- Type: **Bushcraft Knife with Sheath**
- Blade Material: **Stainless Steel**
- Blade Length: **4 inches**
- Total Length: **8.5 inches**



TOOLS IN EVERY HOME

STORM





HAMMERS

CROSS PEIN HAMMER



HT08-0202



HT08-0203



HT08-0205



HT08-0208



HT08-0210

CLAW HAMMER



HT08-0223

LATTHAMMER



HT08-0230

BRICK HAMMER



HT08-0240

SLEDGEHAMMER



HT08-0241



HT08-0242

CROSS PEIN HAMMERS | HT08-0202, HT08-0203, HT08-0205, HT08-0208, HT08-0210

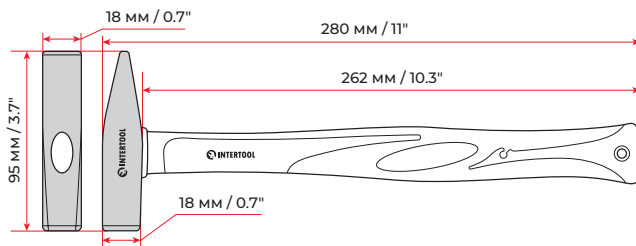


Description

Series of cross pein hammers for professional and DIY heavy duty use. Commonly used for spreading rivet heads, bending and flattening sheet metal, furniture repair, framing, jewelry work, and installing tacks or other small fasteners. Forged with heavy duty steel coated in anti-corrosive protectant for maximum reliability. Face and wedge are smooth polished to support higher contact accuracy. Sturdy fiberglass handle includes rubber with non-slip texture where it matters most and effectively absorbs impact vibration to minimize shock to the hand and arm. Built to be used for both powerful striking when metalworking and soft striking for work with small nails or fragile working pieces.

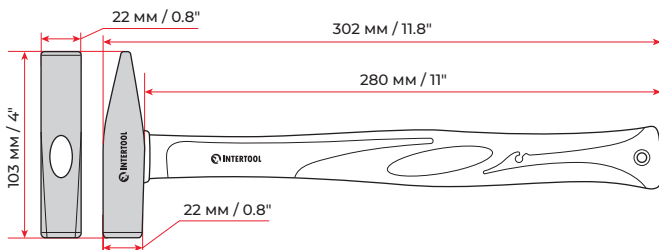
Specifications:

- Head material: **Anti-Corrosive Coated Steel**
- Handle material: **Fiberglass with Rubber Inserts**
- Non-Slip Textured Grip
- Shock Absorbing Handle
- Hang Hole for Storage



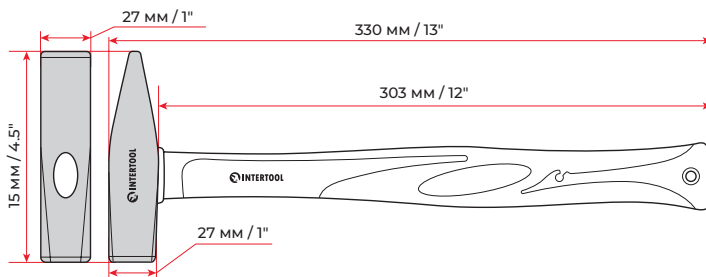
HT08-0202

7 oz
0.44 lbs



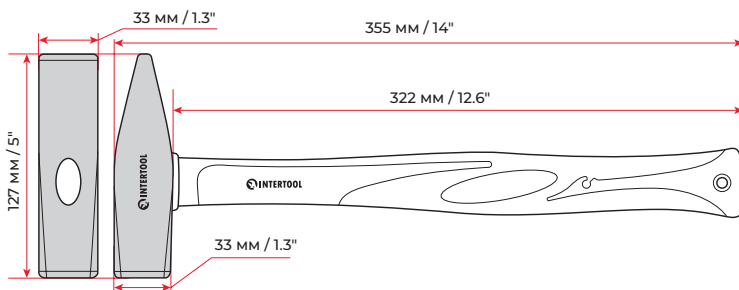
HT08-0203

10.5 oz
0.65 lbs



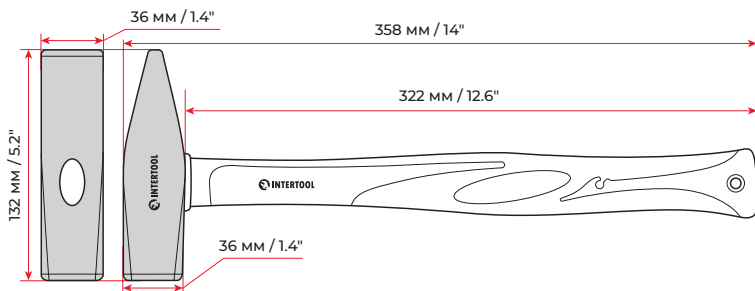
HT08-0205

16 oz
1 lbs



HT08-0208

28 oz
1.8 lbs



HT08-0210

32 oz
2 lbs



CLAW HAMMER | HT08-0223

Carbon Steel

High quality steel with anti-corrosion coating



Curved Claw

Seamless nail removal



Smooth Face

Does not leave patterned marks on work piece like milled hammers

Shock Absorbing

Dampens vibrations to help absorb heavy impact



Fiberglass Handle

Lightweight and durable with anti-slip rubberized coating

Hang Hole

For hanging and safe storage

Description

Multi-purpose hammer for driving, pulling nails, prying boards, demolition, and more. The claw hammer is a must-have in the household. This hammer is forged from quality carbon steel that is coated with anti-corrosive protectant to perform and remain reliable in all conditions. The smooth face is strong and does not leave patterned marks on the workpiece like milled face hammers. The claw is curved to provide leverage to easily pull nails or pry boards. Sturdy fiberglass handle includes rubber with non-slip texture where it matters most and effectively absorbs impact vibration to minimize shock to the hand and arm.

Specifications:

- Head material: **Reinforced, Anticorrosive-Coated Steel**
- Handle material: **Fiberglass with Rubber Insert Grips**
- Total weight: **1.7 pounds**
- Handle length: **12 inches**

LATTHAMMER | HT08-0230

Carbon Steel

High quality steel with anti-corrosion coating

Magnetic Nail Starter

Easily set, nails with one hand and avoid accidental thumb strikes

Claw with Extended Point

Utilize for Pulling nails, chipping or scraping, and making holes in shingles or drywall

Shock Absorbing

Dampens vibrations to help absorb heavy impact

Milled Face

Increased surface grip to catch and sink nails better

Fiberglass Handle

Lightweight and durable with anti-slip rubberized coating

Hang Hole

For hanging and safe storage

Description

The latthammer is a versatile tool mainly used for assembling and deconstructing wood framing. The head is composed of tough carbon steel with anticorrosive coating for maximum reliability. The face of the hammer is milled, or waffle grid, to grip nails and drive them more effectively. The Top features a magnetic nail starter for one handed setting to avoid accidental striking to the thumb and increased working efficiency. The versatility comes from the claw of the hammer with the extended point. Use the claw for pulling nails, removing wooden boards, and deconstructing wood framing. The point is also useful for turning over and moving large boards, prying framing for tiled roofing, and puncturing or breaking wood. The sturdy fiberglass handle includes rubber inserts with grip textured rubber for a non-slip performance.

Specifications:

- Head material: **Anti-Corrosive Coated Carbon Steel**
- Handle material: **Fiberglass with Rubber Insert Grips**
- Total length: **13.6 inches**
- Handle weight: **1.3 pounds**
- Total weight: **2 pounds**

BRICK HAMMER | HT08-0240



Description

The brick hammer, often called a stonemason hammer, is a versatile tool commonly used for masonry and prospecting. The flat end of the head can effectively be used to break apart brick, stone, and concrete. The opposite end is a chisel designed for scoring, cutting, and rounding edges of the aforementioned stone masonry. The head is forged with reinforced carbon steel with anti-corrosive protectant for a reliable performance in all conditions. The sturdy fiberglass handle includes rubber inserts with grip textured rubber for a non-slip performance.

Specifications:

- Head material: **Anti-Corrosive Coated, Hardened Steel**
- Handle material: **Fiberglass with Rubber Insert Grips**
- Total length: **13.8 inches**
- Handle weight: **1.1 pounds**
- Total weight: **1.8 pounds**

SLEDGEHAMMER | HT08-0241, HT08-0242

Reinforced Carbon Steel

High quality steel with anti-corrosion coating



Heavy Duty

Designed to withstand heavy impacts and generate maximum striking force



Shock Absorbing

Dampens vibrations to help absorb heavy impact

Fiberglass Handle

Sturdy with anti-slip rubberized coating and the perfect length for heavy one-handed striking

Hang Hole

For hanging and safe storage

Description

Series of sledgehammers for professional and DIY heavy duty use. Great for demolition, driving wedges or spikes, and metalwork. Head-to-handle weight distribution generates momentum on each swing for maximum striking power. Forged with reinforced steel and coated with anti-corrosive protectant for reliability in all conditions. Sturdy fiberglass handle includes rubber with non-slip texture where it matters most and effectively absorbs impact vibration to minimize shock to the hand and arm. Repeatedly striking solid objects, even with full force, will not shock the hand. These hammers are also known as machinist, engineer, and crack hammers.

Specifications:

HT08-0241

- Head weight: **3 lbs**
- Handle length: **7.8 inches**

HT08-0242

- Head weight: **4 lbs**
- Handle length: **13 inches**

- Head material: **Anti-Corrosive Coated and Reinforced Steel**
- Handle material: **Fiberglass with Rubber Grip Inserts**
- Non-Slip Textured Grip
- Shock Absorbing Handle
- Hang Hole for Storage



TOOLS IN EVERY HOME





TOOLS IN EVERY HOME





INTERTOOL

Tools in Every Home

SCREWDRIVERS



Screwdriver Sets

Upgrade your product line with our professional screwdriver and socket sets. Our comprehensive range of sets are designed to meet the demands of any job. Provide your customers with the best tools on the market and become their go-to source for all their tool needs. Make an impact with our comprehensive range of solutions.





LIFETIME QUALITY

STORM
Professional Line



**Magnetic
Blade Tip**

S2 S2 steel



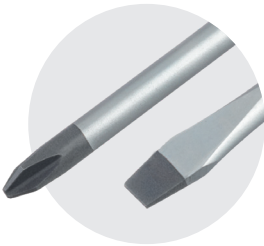
**Durable & Nonslip
Handle**



Anti-roll



**Additional
Features**



**Magnetic
Blade Tip**

Blades tips are magnetic for easy management of loose screws and are precisely cut for a snug fit to avoid stripping. Sandblasted finish reinforces the grip connection between the tip and screw head



S2 steel

Shock resistant S2 modified steel provides excellent durability and toughness. Exceeds chrome vanadium in strength and lifetime



**Durable & Nonslip
Handle**

Durable Polypropylene and anti-slip Thermoplastic Rubber are molded with three torque sections to provide effective leverage to the hands in different application positions. Resistant to oil, grease, and chemicals



**Tip Type
& Size Markings**

Anti-roll design, hang hole for easy storing, and markings for quick identification of screwdriver size and tip type

STORM Line Screwdriver Sets

Designed with quality and user comfort in mind, these screwdrivers are the ultimate solution for all fastener projects. With a comprehensive range including sets with precision screwdrivers and bit sets, the user will never have to compromise on performance. Stored in sleek organizers that can be displayed on your wall or desk, keeping your workspace organized and efficient. Experience the best in screwdriving technology with STORM Screwdrivers.

VT08-3434

4 PIECE

SCREWDRIVER SET



4 pc

SL5, SL6, PH1, PH2

VT08-3436

6 PIECE

SCREWDRIVER SET



6 pc

SL3, SL5, SL6, PH0, PH1, PH2

VT08-3438

8 PIECE

SCREWDRIVER SET



8 pc

SL5, SL6, SL6, SL8, PH0, PH1, PH2, PH2

VT08-3442

12 PIECE

SCREWDRIVER SET



12 pc

SL2, SL2.5, SL3, SL5, SL6, PH00, PH0, PH1, PH2

VT08-3443

36 PIECE

SCREWDRIVER AND BIT SET WITH MOUNTABLE ORGANIZER RACK



Quantity of Pieces

36 pc

Screwdriver Types

SL2.5, SL3, SL5, SL6, SL8, PH00, PH0, PH1, PH2, T5, T6, T7, T8, T9, T10

Bit Types

SL4, SL5, SL6, SL7, PH1, PH2, PH3, PZ1, PZ2, PZ3, T15, T20, T25, T30

VT08-3657

57 PIECE

MINI DRIVE SOCKET AND BIT WRENCH SET



Extension Bars

6", 2"

Sliding Bar

4-1/2"

Hex Keys

1.5, 2, 2.5

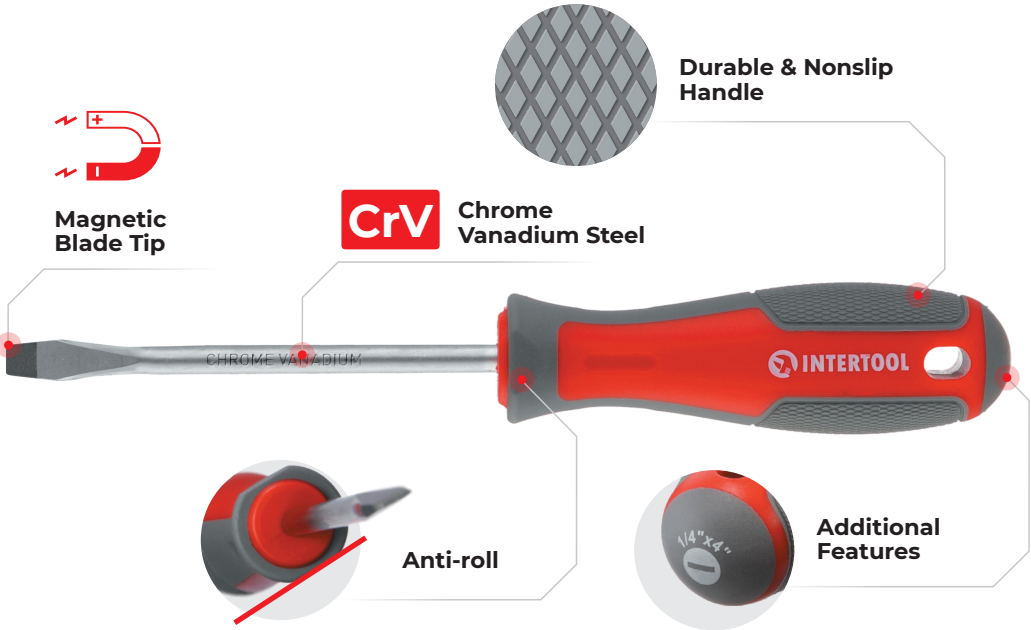
Driver Ratchet Handle, Universal Joint, Bit Holder

Bits

SL1/8", SL5/32", SL3/16", SL3/16", SL1/4", SL1/4", SL9/32", SL9/32", PH0, PH1, PH1, PH2, PH2, PH3, PH3, PZ0, PZ1, PZ1, PZ2, PZ2, PZ3, PZ3, T10, T15, T20, T25, T27, T30, H1/8", H5/32", H3/16", H1/4", S0, S1, S2, S3

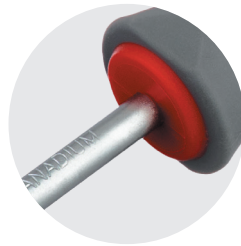
1/4" Sockets

5/32", 3/16", 7/32", 1/4", 9/32", 5/16", 11/32", 3/8", 7/16", 15/32", 1/2", 5/16"



Magnetic Blade Tip

Blades tips are magnetic for easy management of loose screws and are precisely cut for a snug fit to avoid stripping



Chrome Vanadium (Cr-V) Steel

High quality chrome vanadium steel resists wear and corrosion while providing substantial strength for heavy torque usage



Durable & Nonslip Handle

Chemical-resistant Polypropylene and anti-slip Thermoplastic Rubber material are formed to offer a sturdy and leveraged grip



Tip Type & Size Markings

Anti-roll design, hang hole for easy storing, and markings for quick identification of screwdriver size and tip type

DIY Screwdriver Sets

DIY

Introducing various sets of magnetic screwdrivers in our DIY design, including sets with a range of precision screwdrivers, bits, and sockets in quantities of 20, 29, 58, 63, and 70 pieces, with unique and convenient cases

VT08-3363

63 PIECE MAGNETIC SCREWDRIVER, BIT, AND SOCKET SET



Screwdrivers SL3 x 3", SL5 x 4", SL6 x 5", PH0 x 3", PH1 x 4", PH2 x 4", PH2 x 5"

Precision Screwdrivers SL2 x 2", SL2.5 x 2", PH00 x 2", PH000 x 2", T6 x 2", T8 x 2"

Offset Screwdrivers PH2 - 1/4", PH1 - 3/16"

Bit Holding Screwdriver, Magnetizer

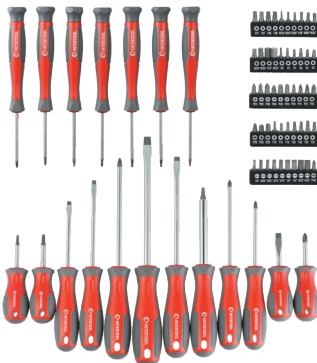
Bits SL3, SL4, SL4, SL5, SL5, SL6, SL6, PH0, PH1, PH1, PH2, PH2, PH3, PH3, PZ0, PZ1, PZ1, PZ2, PZ2, PZ3, T10, T15, T20, T25, T27, T30, T35, H3, H4, H5, H6, S0, S1, S2, S3

Sockets 5/32", 3/16", 1/4", 9/32", 5/16", 11/32", 3/8", 7/16", 15/32"

Special Features Wall mounts transform set into a cabinet

VT08-3370

70 PIECE MAGNETIC SCREWDRIVER AND BIT SET



Screwdrivers SL5 x 3", SL5 x 4", SL6 x 5", SL6 x 1-1/2" (Stubby), SL8 x 6", PH1 x 3", PH1 x 4", PH2 x 1-1/2" (Stubby), PH2 x 5", S1 x 1-1/2" (Stubby), S2 x 1-1/2" (Stubby)

Precision Screwdrivers SL2.5 x 1-9/16", SL3 x 1-9/16", PH00 x 1-9/16", PH0 x 1-9/16", T8 x 1-9/16", T9 x 1-9/16", T10 x 1-9/16"

Bits SL3, SL4, SL4, SL5, SL5, SL6, SL6, PH0, PH1, PH1, PH2, PH2, PH3, PH3, PZ0, PZ1, PZ1, PZ2, PZ2, PZ3, T10, T15, T20, T25, T27, T30, T35, H3, H4, H5, H6, S0, S1, S2, S3

VT08-3329

29 PIECE SCREWDRIVER AND BIT SET



Screwdrivers SL5 x 4", SL6 x 4", PH1 x 4", PH2 x 6"

Precision Screwdrivers SL3 x 1 9/16", SL2 x 1 9/16", PH0 x 1 9/16", PH00 1 9/16"

Bit Holding Screwdriver

Bits

SL3, SL4, SL5, SL6, PH0, PH1, PH2, PH3, T10, T15, T20, T25, T27, T30, T40, H1/16", H3/32", H1/8", H5/32", H3/16"

VT08-3358

58 PIECE SCREWDRIVER AND BIT SET



Screwdrivers SL6 x 1-1/2" (Stubby), SL5 x 4", SL6 x 5", PH2 x 5", PH2 x 4", PH1 x 3", PH2 x 1-1/2" (Stubby)

Precision Screwdrivers SL2.5 x 2", SL2 x 2", PH0 x 2", PH00 x 2", T5x2", T6 x 2", T7 x 2", T8 x 2", T9 x 2", T10 x 2"

Bits

SL3, SL3, SL4, SL4, SL5, SL5, SL6, SL6, PH0, PH0, PH1, PH1, PH2, PH2, PH3, PH3, T10, T10, T15, T15, T20, T20, T25, T25, T27, T27, T30, T30, H2, H2, H2.5, H3, H3, H4, H4, H5, H5, H6, H6

VT08-3371

20 PIECE SCREWDRIVER SET WITH STAND / SHELF



Screwdrivers SL8 x 6", SL4 x 4", SL6 x 6", SL6 x 4", SL5 x 3", SL3 x 3", SL6 x 1-1/2" (Stubby), PH2 x 6", PH2 x 4", PH1 x 3", PH0 x 3", PH2 x 1-1/2" (Stubby), T25 x 4", T20 x 4", T15 x 3", T10 x 3"

Precision Screwdrivers SL2.5 x 2", SL2 x 2", PH0 x 2", PH00 x 2"

Special Features

Removable legs for a standing or shelf placement



Description

This comprehensive set of Screwdrivers presents the ultimate solution for all your fastening requirements. The robust organizer stand that accompanies the set serves as an ideal support system for your domestic and workshop needs. It can be placed effortlessly on any flat surface or can be mounted on the wall at your most demanding location, offering unparalleled convenience and accessibility

Screwdrivers

SL1/8" x 3", SL3/16" x 3", SL3/16" x 4", SL1/4" x 4", SL1/4" x 6", SL5/16" x 6", PH0 x 3", PH1 x 3", PH1 x 4", PH2 x 4", PH2 x 6", T10 x 3", T15 x 3", T20 x 3", S1 x 3", S2 x 4"

Precision Screwdrivers

SL3/32" x 1-9/16", SL1/8" x 1-9/16", PH00 x 1-9/16", PH0 x 1-9/16", T6 x 1-9/16", T7 x 1-9/16"

Bit Holding Screwdriver, Precision Bit Holding Screwdriver

Bits

SL1/8", SL5/32", SL11/64", SL3/16", SL7/32", SL1/4", SL9/32", SL5/16", PH0, PH0, PH1, PH1, PH2, PH2, PH3, PH3, PZ0, PZ0, PZ1, PZ1, PZ2, PZ2, PZ3, PZ3, T6, T8, T10, T15, T20, T25, T27, T30, T35, T40, H1/16", H3/32", H7/64", H1/8", H9/64", H5/32", H3/16", H7/32", H1/4", H5/16", S0, S1, S2, S3

Precision Bits

SL1/16", SL5/64", SL3/32", SL1/8", SL5/32", PH000, PH00, PH0, PH1, T4, T5, T6, T7, T8, T9, T10, T15, T20, H0.7, H0.9

Nut Driver Bits

1/4", 9/32", 5/16", 11/32", 3/8", 7/16"

VT08-3341

6-IN-1

**QUICK CHANGE
SCREWDRIVER**



1/4" Double-sided Bit

PH1 - SL3/16"

5/16" Double-sided Bit

PH2 - SL1/4"

Double-sided Nut Driver

1/4" & 5/16"

VT08-3346

6 PIECE

**MAGNETIC DEMAND
SCREWDRIVERS SET**



Screwdrivers

SL1/4" x 4", SL3/16" x 4",
SL1/8" x 3", PH2 x 4",
PH1 x 3", PH0 x 3"

VT08-3349

9 PIECE

MAGNETIC SCREWDRIVER SET WITH QUICK GRAB RACK



Screwdrivers

SL5/16x6", SL1/4x6", SL1/4x4",
SL3/16x3", SL1/8x3", PH3 x 6",
PH2 x 4", PH1 x 3", PH0 x 3"

Precision
Screwdrivers

Quick Access Portable and Mountable Rack
Effortlessly take and place screwdrivers
where most needed or on the go

VT08-3351

27 PIECE

MAGNETIC SCREWDRIVER AND BIT SET WITH CARRY CASE



Screwdrivers

SL1/8" x 3", SL3/16" x 4", SL1/4" x 4",
PH0 x 4", PH1 x 4", PH2 x 6"

Bit Holding Screwdriver

Bits

5/32", 3/16", 1/4", PH0, PH1, PH2, PH3,
PZ1, PZ2, PZ3, T8, T9, T10, T15, T20,
T25, H1/8", H5/32", H3/16", H1/4"

VT08-3347

7 PIECE

PRECISION SCREWDRIVER SET WITH CASE



Precision Screwdrivers

3/32" x 2", 1/8" x 2", PH0 x 2", PH0 x 2", T6 x 2", T7 x 2", T8 x 2"

Plastic Hard Case

Special Features

360 Degree Spinning End Caps

VT08-3352

51 PIECE

PORTABLE MAGNETIC SCREWDRIVER AND RATCHET SET



Screwdrivers

SL1/4" x 5", SL3/16" x 4", SL1/8" x 3", PH2 x 5", PH1 x 4", PH0 x 3"

Ratchet Bit Holding Screwdriver, Tweezers, Magnetizer

Bits

SL1/8", SL5/32", SL3/16", SL3/16", SL1/4", SL1/4", PH0, PH1, PH2, PH2, PH3, PH3, PZ0, PZ1, PZ2, PZ3, T10, T15, T20, T20, T25, T25, T27, T30, H1/8", H5/32", H3/16", H1/4", S0, S1, S2, S3

1/4" Sockets

5/32", 3/16", 1/4", 9/32", 5/16", 11/32", 3/8", 7/16", 1/2"

VT08-3374

31 PIECE

RATCHET SCREWDRIVER BIT AND SOCKET SET



Ratchet Bit Holding Screwdriver, Socket Adapter

Bits

SL1/8", SL5/32", SL3/16", SL1/4", PH0, PH1, PH2, PH2, PH3, T10, T15, T20, PZ1, PZ2, H5/32", H3/16, H1/4"

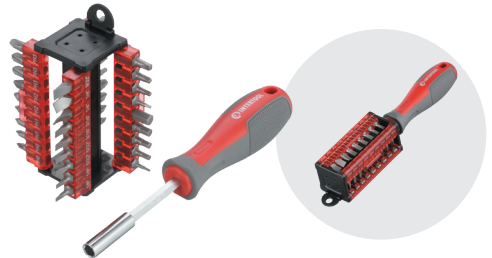
1/4" Sockets

3/16", 1/4", 9/32", 5/16", 11/32", 5/32", 4mm, 5mm, 6mm, 7mm, 8mm, 9mm

VT08-3375

37 PIECE

MULTI-BIT SCREWDRIVER SET



Multi-Bit Screwdriver

Bits

1/8", 1/8", 5/32", 5/32", 3/16", 3/16", 1/4", 1/4", 9/32", PH0, PH0, PH1, PH1, PH2, PH2, PH3, PH3, PH3, T15, T20, T25, T27, T30, H1/16", H1/8", H3/32", H3/16", H1/4", PZ0, PZ1, PZ2, PZ3, S0, S1, S2, S3

VT08-3330

29 PIECE T-HANDLE RATCHET SCREWDRIVER BIT AND SOCKET SET



Ratchet T Handle Bits Driver, 4" Magnetic Holder, 25mm Socket Adapter, Precision Bit Adapter, Hard Case with Metal Hanger

Bits	SL5/32", SL3/16", SL1/4", PH1, PH2, PH3, T15, T20, T25, H5/32", H3/16", H1/4"
------	---

Precision Bits	SL5/64", SL3/32", SL1/8", PH000, PH00, PH0, T4, T5, T6, 1/4"
----------------	--

1/4" Sockets	9/32", 5/16", 3/8"
--------------	--------------------

VT08-3353

53 PIECE MINI RATCHET SCREWDRIVER BIT SET



Mini Ratchet Bit Holding Screwdriver, Plastic Locking Hard Case

Bits	1/8", 1/8", 5/32", 5/32", 3/16", 3/16", 1/4", 1/4", 9/32", 9/32", PH0, PH0, PH1, PH1, PH2, PH2, PH3, PH3, PZ0, PZ0, PZ1, PZ1, PZ2, PZ2, PZ3, PZ3, T10, T10, T15, T15, T20, T20, T25, T25, T27, T27, H1/8", H1/8", H5/32", H5/32", H3/16, H3/16", H1/4", H1/4", S0, S0, S1, S1, S2, S2, S3, S3
------	---

VT08-3373

45 PIECE SCREWDRIVER BIT SET AND QUICK CHANGE BIT HOLDER



Magnetic Quick Change Bit Holder, Hard Case with Metal Hanger

Bits	SL1/8", SL1/8", SL5/32", SL5/32", SL3/16", SL3/16", SL1/4", SL1/4", SL9/32", SL9/32", PH0, PH0, PH1, PH1, PH2, PH2, PH3, PH3, T10, T10, T15, T15, T20, T20, T25, T25, T27, T27, T30, T30, PZ0, PZ1, PZ2, PZ3, H1/8", H5/32", H5/32", H3/16", H3/16", H1/4", S0, S1, S2, S3
------	--

VT08-3376

19-IN-1

MULTI-BIT RATCHET SCREWDRIVER SET



Nut Driver	5/16" - 3/8"
5/16" Double Ended	PH3 - SL5/16"
1/4" Double Ended Bits	PH2 - SL1/4", PH3 - SL3/16", PH0 - SL1/8", T25 - T30, T15 - T20, H5/32" - H3/16", S1 - S2
Bit Types	Phillips, Slotted, Torx, Hex, and Square

VT08-3638

38 PIECE

MINI RATCHET SCREWDRIVER BIT AND SOCKET SET WITH CARRY CASE

Mini Ratchet Bit Holding Screwdriver
Socket Adapter



Bits	SL1/8", SL5/32", SL3/16", SL1/4", SL1/4", PH0, PH1, PH2, PH3, PZ0, PZ1, PZ2, PZ3, T10, T15, T20, T25, T27, T30, H1/8", H5/32", H3/16", H1/4", S0, S1, S2, S3
1/4" Sockets	5/32", 3/16", 1/4", 9/32", 5/16", 11/32", 3/8", 7/16", 1/2"



TOOLS IN EVERY HOME



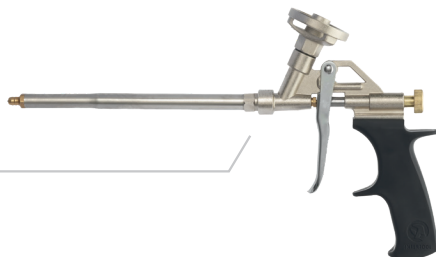
FOAM DISPENSING GUNS & CAULKING GUNS



DIY

LINE

PT08-0603



PT08-0604



PT08-0605



PT08-0608



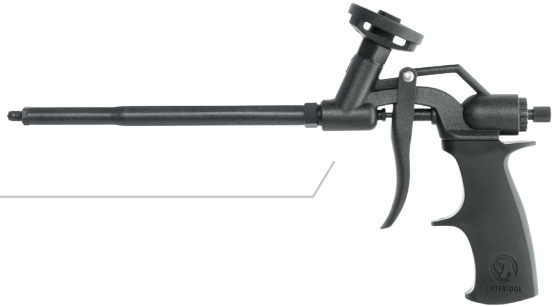
PT08-0650



STORM

LINE

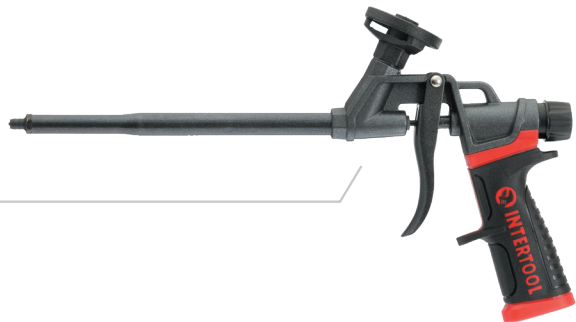
PT08-0606



PT08-0609



PT08-0610



FOAM GUN | PT08-0603

DIY



Four Extra Tips

Includes extra tip attachments for hard-to-reach areas



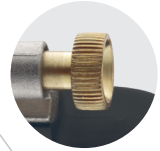
Copper Tip

Creates a tight seal around the needle to prevent foam leakage



Foam Basket / Entrance

Air-tight foam canister connection



Flow Control Knob

Easily manage the amount of foam applied and avoid wasted material

Non-Slip Trigger

Control foam release with precision

Ergonomic Handle

Made of durable polypropylene that prevents foam from sticking

Composed of Aluminum with Stainless Steel Barrel & Needle

Description

For precise application of insulation or sealant foam. Commonly used for sealing windows, doors, cracks, gaps, and the application of fireblock foam. Compatible canisters easily screw onto the basket and can remain uncured and pressurized for up to 30 days when stored. Flow control knob and smooth trigger gives you full control of the amount of foam you need for each job, reducing waste compared to straw tipped canister dispensers. 4 included plastic tip attachments for further flow customization and reach. Recommended to clean with compatible cleaning canisters after each use for best lifetime performance.

Material Specifications:

- Body & Basket / Holder: **Aluminum**
- Barrel & Needle: **Stainless Steel**
- Tip: **Copper**
- Handle: **ABS Plastic**
- Extra tips: **Plastic**

Compatibility

Supports most foam sealant and cleaner twist canisters such as AdvanTech and Great Stuff Pro Gaps & Cracks, Window & Door, Wall & Floor Construction Adhesive, and Cleaner threaded cans.



Four Extra Tips

Includes extra tip attachments for hard-to-reach areas



Copper Tip

Creates a tight seal around the needle to prevent foam leakage



Foam Basket / Entrance

Air-tight foam canister connection



Non-Slip Trigger

Control foam release with precision

Ergonomic Handle

Made of durable polypropylene that prevents foam from sticking



Advanced Flow Control Knob

Easily manage the amount of foam applied and avoid wasted material.

Patented design by INTERTOOL

Description

For precise application of insulation or sealant foam. Commonly used for sealing windows, doors, cracks, gaps, and the application of fireblock. Compatible canisters easily screw onto the basket and can remain uncured and pressurized for up to 30 days when stored. Patented flow control knob and smooth trigger gives you full control of the amount of foam you need for each job, reducing waste compared to straw tipped canister dispensers. 4 included plastic tip attachments for further flow customization and reach. Recommended to clean with compatible cleaning canisters after each use for best lifetime performance.

Material Specifications:

- Body & Basket / Holder: **ABS Plastic**
- Barrel & Needle: **Stainless Steel**
- Tip: **Copper**
- Handle: **ABS Plastic**
- Extra tips: **Plastic**

Compatibility

Supports most foam sealant and cleaner twist canisters such as AdvanTech and Great Stuff Pro Gaps & Cracks, Window & Door, Wall & Floor Construction Adhesive, and Cleaner threaded cans.

FOAM GUN | PT08-0604

DIY



Four Extra Tips

Includes extra tip attachments for hard-to-reach areas



PTFE Coated Foam Basket / Entrance

Air-tight foam canister connection



Flow Control Knob

Easily manage the amount of foam applied and avoid wasted material

PTFE Coated Copper Tip

Creates a tight seal around the needle to prevent foam leakage

PTFE

Easy to clean

Composed of Aluminum body with PTFE coated Basket and Tip

Non-Slip Trigger

Control foam release with precision

Ergonomic Handle

Made of durable polypropylene that prevents foam from sticking

Description

For precise application of insulation or sealant foam. Commonly used for sealing windows, doors, cracks, gaps, and the application of fireblock. Compatible canisters easily screw onto the basket and can remain uncured and pressurized for up to 30 days when stored. Flow control knob and smooth trigger gives you full control of the amount of foam you need for each job, reducing waste compared to straw tipped canister dispensers. PTFE (Teflon) Coated basket and tip for protection against foam curing and easy cleaning. 4 included plastic tip attachments for further flow customization and reach. Recommended to clean with compatible cleaning canisters after each use for best lifetime performance.

Material Specifications:

- PTFE/Teflon Coating: **Basket and Tip**
- Body & Basket / Holder: **Aluminum**
- Barrel & Needle: **Stainless Steel**
- Tip: **Copper**
- Handle: **ABS Plastic**
- Extra tips: **Plastic**

Compatibility

Supports most foam sealant and cleaner twist canisters such as AdvanTech and Great Stuff Pro Gaps & Cracks, Window & Door, Wall & Floor Construction Adhesive, and Cleaner threaded cans.

FOAM GUN | PT08-0605

DIY



Four Extra Tips

Includes extra tip attachments for hard-to-reach areas



PTFE Coated Copper Tip

Creates a tight seal around the needle to prevent foam leakage



PTFE Coated Foam Basket / Entrance

Air-tight foam canister connection

PTFE
Easy to clean

Composed of Aluminum with PTFE Body, Basket, Needle, & Tip

Non-Slip Trigger

Control foam release with precision

Ergonomic Handle

Made of durable polypropylene that prevents foam from sticking



Advanced Flow Control Knob

Easily manage the amount of foam applied and avoid wasted material.

Patented design by **INTERTOOL**

Description

For precise application of insulation or sealant foam. Commonly used for sealing windows, doors, cracks, gaps, and the application of fireblock. Compatible canisters easily screw onto the basket and can remain uncured and pressurized for up to 30 days when stored. Patented flow control knob and smooth trigger gives you full control of the amount of foam you need for each job, reducing waste compared to straw tipped canister dispensers. PTFE (Teflon) coated basket, needle, and tip for easy cleaning and protection against foam curing. 4 included plastic tip attachments for further flow customization and reach. Recommended to clean with compatible cleaning canisters after each use for best lifetime performance.

Material Specifications:

- PTFE/Teflon Coating: **Basket, Needle, and Tip**
- Body & Basket / Holder: **Aluminum**
- Barrel & Needle: **Stainless Steel**
- Tip: **Copper**
- Handle: **ABS Plastic**
- Extra tips: **Plastic**

Compatibility

Supports most foam sealant and cleaner twist canisters such as AdvanTech and Great Stuff Pro Gaps & Cracks, Window & Door, Wall & Floor Construction Adhesive, and Cleaner threaded cans.

FOAM GUN | PT08-0606

STORM



Five Extra Tips

Includes extra tip attachments for hard-to-reach areas



PTFE Coated Foam Basket / Entrance

Air-tight foam canister connection



PTFE Coated Copper Tip

Creates a tight seal around the needle to prevent foam leakage



PTFE
Easy to clean

Composed of Aluminum fully coated in PTFE

Non-Slip Trigger

Control foam release with precision

Ergonomic Handle

Made of durable polypropylene that prevents foam from sticking



Advanced Flow Control Knob

Easily manage the amount of foam applied and avoid wasted material.

Patented design by **INTERTOOL**

Description

For precise application of insulation or sealant foam. Commonly used for sealing windows, doors, cracks, gaps, and the application of fireblock. Compatible canisters easily screw onto the basket and can remain uncured and pressurized for up to 30 days when stored. Patented flow control knob and smooth trigger gives you full control of the amount of foam you need for each job, reducing waste compared to straw tipped canister dispensers. Fully PTFE (Teflon) for easy cleaning and protection against foam curing. 4 included plastic tip attachments for further flow customization and reach. Recommended to clean with compatible cleaning canisters after each use for best lifetime performance.

Material Specifications:

- PTFE/Teflon Coating: **Body, Basket, Barrel, Needle, and Tip**
- Body & Basket / Holder: **Aluminum**
- Barrel & Needle: **Stainless Steel**
- Tip: **Copper**
- Handle: **ABS Plastic**
- Extra tips: **Plastic**

Compatibility

Supports most foam sealant and cleaner twist canisters such as AdvanTech and Great Stuff Pro Gaps & Cracks, Window & Door, Wall & Floor Construction Adhesive, and Cleaner threaded cans.

FOAM GUN | PT08-0609

STORM



Four Extra Tips

Includes extra tip attachments for hard-to-reach areas



Copper Tip

Creates a tight seal around the needle to prevent foam leakage



Composed of Aluminum with Professional handle

Non-Slip Trigger

Control foam release with precision

Professional Ergonomic Handle

Advanced polypropylene grip for maximum comfort and hold



Foam Basket / Entrance

Air-tight foam canister connection



High-Precision Flow Control Knob

Easily manage the amount of foam applied and avoid wasted material.

Patented design by **INTERTOOL**

Description

For precise application of insulation or sealant foam. Commonly used for sealing windows, doors, cracks, gaps, and the application of fireblock. Compatible canisters easily screw onto the basket and can remain uncured and pressurized for up to 30 days when stored. Patented, advanced flow control knob and smooth trigger gives you full control of the amount of foam you need for each job, reducing waste compared to straw tipped canister dispensers. Updated handle fits more ergonomically in hand and decreases user fatigue. 4 included plastic tip attachments for further flow customization and reach. Recommended to clean with compatible cleaning canisters after each use for best lifetime performance.

Material Specifications:

- PTFE/Teflon Coating: **Basket**
- Body & Basket / Holder: **Aluminum**
- Barrel & Needle: **Stainless Steel**
- Tip: **Copper**
- Handle: **Non-Stick Polypropylene**
- Extra tips: **Plastic**

Compatibility

Supports most foam sealant and cleaner twist canisters such as AdvanTech and Great Stuff Pro Gaps & Cracks, Window & Door, Wall & Floor Construction Adhesive, and Cleaner threaded cans.

FOAM GUN | PT08-0610

STORM



Five Extra Tips
Includes extra tip attachments for hard-to-reach areas and a grout scraper

PTFE Coated Copper Tip

Creates a tight seal around the needle to prevent foam leakage



PTFE
Easy to clean

Composed of Aluminum fully coated in PTFE with Professional handle

Non-Slip Trigger

Control foam release with precision

Professional Ergonomic Handle

Advanced polypropylene grip for maximum comfort and hold



PTFE Coated Foam Basket / Entrance

Air-tight foam canister connection



High-Precision Flow Control Knob

Easily manage the amount of foam applied and avoid wasted material.
Patented design by INTERTOOL

Description

For precise application of insulation or sealant foam. Commonly used for sealing windows, doors, cracks, gaps, and the application of fireblock. Compatible canisters easily screw onto the basket and can remain uncured and pressurized for up to 30 days when stored. Patented flow control knob and smooth trigger gives you full control of the amount of foam you need for each job, reducing waste compared to straw tipped canister dispensers. Fully PTFE (Teflon) for easy cleaning and protection against foam curing. Updated handle fits more ergonomically in hand and decreases user fatigue. 4 included plastic tip attachments for further flow customization and reach. Recommended to clean with compatible cleaning canisters after each use for best lifetime performance.

Material Specifications:

- PTFE/Teflon Coating: **Body, Basket, Barrel, Needle, and Tip**
- Body & Basket / Holder: **Aluminum**
- Barrel & Needle: **Stainless Steel**
- Tip: **Copper**
- Handle: **Non-Stick Polypropylene**
- Extra tips: **Plastic**

Compatibility

Supports most foam sealant and cleaner twist canisters such as AdvanTech and Great Stuff Pro Gaps & Cracks, Window & Door, Wall & Floor Construction Adhesive, and Cleaner threaded cans.

FOAM GUN | PT08-0650

DIY



Four Extra Tips

Includes extra tip attachments for customization



Copper Tip

Creates a tight seal around the needle to prevent foam leakage



Extended Barrel

Long nose barrel for hard-to-reach areas



Foam Basket / Entrance

Air-tight foam canister connection

Non-Slip Trigger

Control foam release with precision



Flow Control Knob

Easily manage the amount of foam applied and avoid wasted material

Composed of Aluminum with Stainless Steel Barrel & Needle

Ergonomic Handle

Made of durable polypropylene that prevents foam from sticking

Description

For precise application of insulation or sealant foam. Commonly used for sealing windows, doors, cracks, gaps, and the application of fireblock. Compatible canisters easily screw onto the basket and can remain uncured and pressurized for up to 30 days when stored. 20 inch Extended barrel helps reach floor and ceiling level objectives with ease. Flow control knob and smooth trigger gives you full control of the amount of foam you need for each job, reducing waste compared to straw tipped canister dispensers. 4 included plastic tip attachments for further flow customization and reach. Recommended to clean with compatible cleaning canisters after each use for best lifetime performance.

Material Specifications:

- Body & Basket / Holder: **ABS Plastic**
- Barrel & Needle: **Stainless Steel**
- Tip: **Copper**
- Handle: **ABS Plastic**
- Extra tips: **Plastic**

Compatibility

Supports most foam sealant and cleaner twist canisters such as AdvanTech and Great Stuff Pro Gaps & Cracks, Window & Door, Wall & Floor Construction Adhesive, and Cleaner threaded cans.



Compatible with Standard 9oz, 10oz, and 11oz tubes

Apply latex, silicone, construction adhesive, polyurethanes, and dual component epoxies

Easy Reset/Reload

Pull or push rod effortlessly to replace, set, or unload cartridges

Lightweight Frame

Drip-Free

Smooth pressure rod slightly retracts to prevent dripping after every trigger pull

Quiet Trigger Mechanism

Less noisy than metal caulk guns



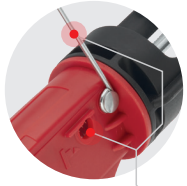
Description

Presenting a simple caulking solution that is lighter weight and quieter than metal framed caulking guns. Commonly used to seal gaps and cracks or bond a wide range of materials such as metal, wood, glass, and ceramic. The smooth rod retracts slightly after each trigger pull allowing for a drip-free performance. Simply adjust the rod as necessary with the pull hook on the back of the tool to load, set, and remove cartridges. Compatible with standard 9 - 11 oz cartridges of latex, silicone, construction adhesive, polyurethanes, and dual component epoxies.

Specifications:

- High Trigger pressure
- Ergonomic design and optimum gear ratio for fatigue-free working
- Half-barrel design for quick canister changes
- Fits most standard size caulking cartridges between 9 - 11 oz (280 - 310 ml)
- Weight: 0.7 lbs

CAULKING GUNS | HT08-0028



Spout Cutter & Seal Puncture Tool

Easily open caulking canisters without getting a different tool



Compatible with Standard 9oz, 10oz, and 11oz tubes

Apply latex, silicone, construction adhesive, polyurethanes, and dual component epoxies

Drip-Free Selector

Have control of continuous or dripless dispensing

Lightweight Frame



Easy Reset /Reload

Pull or push rod effortlessly to replace, set, or unload cartridges

Quiet Trigger Mechanism

Less noisy than metal caulk guns

Description

Presenting a simple caulking solution that is lighter weight, quieter, and more utilizable than metal framed caulking guns. Commonly used to seal gaps and cracks or bond a wide range of materials such as metal, wood, glass, and ceramic. Select between drip-free or continuous flow depending on the task or when rest is needed. When drip-free mode is on, the smooth rod retracts slightly after each trigger pull stopping any further flow. Simply adjust the rod as necessary with the pull hook on the back of the tool to load, set, and remove cartridges. When set to continuous flow, squeeze the release trigger on the back above the handle to release the locked rod. The handle features anti-slip rubber for a better grip in all conditions. Features a spout cutter and puncture tool to easily open new cartridges without grabbing a different tool. Compatible with standard 9 - 11 oz cartridges of latex, silicone, construction adhesive, polyurethanes, and dual component epoxies.

Specifications:

- High trigger pressure
- Ergonomic design and optimum gear ratio for fatigue-free working
- Half-barrel design for quick cartridge changes
- Drip-free and continuous flow selector
- Built-in Spout cutter
- Attached seal puncture tool
- Fits most standard size caulking cartridges between 9 - 11 oz (280 - 310 ml)
- Weight: 1 lbs





INTERTOOL
Tools in Every Home

PNEUMATIC TOOLS AND AIR ACCESSORIES



RANDOM ORBIT SANDER

| PT08-1006



**Two 5" Backing Pads
and Backing Pad
Removal Wrench**

Palm Trigger

For simple and
convenient control

Non-Slip Body

Ergonomic shape and
material for maximum grip.
Minimized user fatigue

5" Hook & Loop Backing Pad

Maximum RPM: 10,000



Air Inlet Regulator

Controls Air Flow
and RPM Output



1/4" I/M Plug

For Easy Air Hose
Connection.
Up to 90 PSI

Rear Air Exhaust

Keeps Work Area Dust
& Particle Free

Description

All-purpose random orbital palm sander designed for user comfort during long durations of work, decreased vibration, and horizontal or vertical application. Most commonly used for smoothing and finishing wood, plastics, and metals. Great for paint preparation, rust removal on metal, and restoring headlight transparency. Random oscillation ensures that the abrasive material never covers the same path twice to avoid swirling patterns on the workpiece, leaving a uniform finish. This sander includes ergonomic features such as a touch-controlled trigger located where the palm of the hand sits, built-in speed regulation, rear exhaust to keep work area clean, and quick backing pad interchange design.

Specifications:

- Air Inlet Size: **1/4 inch**
- Max PSI: **90**
- Max RPM: **9,000**
- Backing Pad Size: **5 inches**
- Orbit Sander Weight: **2.25 lbs**
- Total Weight: **2.95 lbs**

Components List:

- Random Orbit Sander - 1
- 1/4" MNPT Plug - 1
- Backing Pad Removal Tool - 1
- 5" Backing Pads - 2



PT08-2125



Hook and Loop Connection

Quick, easy, and reusable attachment system. Avoid hassle and mess of adhesive backing pads

5/16" Arbor - 24 Thread

Fits most DA sanders of all brands



Width:
5 inches

Max RPM:
10,000

Flexible Polyurethane Foam Construction

Provides adequate cushion for high performance sanding on flat or contoured surfaces

Strong Steel Core

Reinforced with steel struts to provide well-balanced and even surface contact



PT08-1007



Two 6" Backing Pads, Backing Pad Removal Wrench, Vacuum Hose, Vacuum Bag

Palm Trigger

For simple and convenient control

Non-Slip Body

Ergonomic shape and material for maximum grip. Minimized user fatigue



Air Inlet Regulator

Controls Air Flow and RPM Output

6" Hook & Loop Backing Pad

Maximum RPM: 10,000



1/4" I/M Plug

For Easy Air Hose Connection. Up to 90 PSI

Vacuum Port

Attach Vacuum Hose and Bag to Keep the Work Area Dust & Particle Free

Description

All-purpose random orbital palm sander designed for user comfort during long durations of work, decreased vibration, and horizontal or vertical application. Most commonly used for smoothing and finishing wood, plastics, and metals. Great for paint preparation, rust removal on metal, and restoring headlight transparency. Random oscillation ensures that the abrasive material never covers the same path twice to avoid swirling patterns on the workpiece, leaving a uniform finish. The 6" backing pad covers more surface area and also features 6 vacuum ready holes to extract dust away from the work piece and into the vacuum bag. This sander includes ergonomic features such as a touch-controlled trigger located where the palm of the hand sits, built-in speed regulation, rear exhaust to keep work area clean, and quick backing pad interchange design.

Specifications:

- Air Inlet Size: **1/4 inch**
- Max PSI: **90**
- Max RPM: **9,000**
- Backing Pad Size: **6 inches**
- Orbit Sander Weight: **2.35 lbs**
- Total Weight: **3.60 lbs**

Components List:

- Random Orbit Sander - 1
- Quick Coupler Connector - 1
- Backing Pad Removal Tool - 1
- 50" Vacuum Hose - 1
- Dust Collection Bag - 1
- 6" Backing Pads - 2

PT08-2150

Vacuum Ready

6 precut holes for dustless sanding

**5/16" Arbor
- 24 Thread**

Fits most DA sanders of all brands



Hook and Loop Connection

Quick, easy, and reusable attachment system. Avoid hassle and mess of adhesive backing pads

Width:
6 inches

Max RPM:
10,000



Flexible Polyurethane Foam Construction

Provides adequate cushion for high performance sanding on flat or contoured surfaces

Strong Steel Core

Reinforced with steel struts to provide well-balanced and even surface contact



PT08-1103



**1/4" Plug
Included**

3" Extended Anvil

1/2" Drive

Full Metal Body

Twin Hammer

**Direction Control
Forwards/Reverse**

**Torque:
425 Ft/lbs**

**Max RPM:
7500**

**Non-Slip
Cushion Grip**



**5-Speed
Power Regulator**

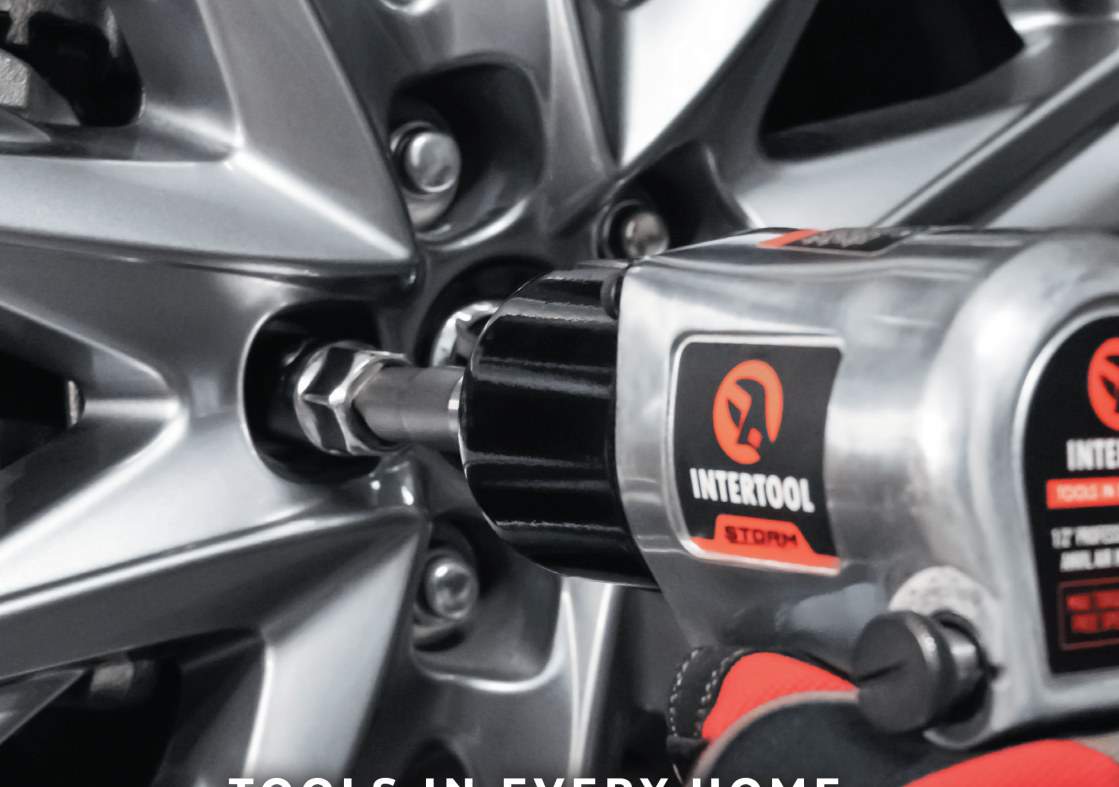
Description

The INTERTOOL 1/2" Air Impact Wrench PT08-1103 with its extended 3 inch extended anvil is the ideal heavy duty tool for automotive mechanics who do tire work on cars and trucks. Aside from automobiles this tool works great for reaching nuts and bolts in tight areas where short anvil impact wrench cannot get to. This impact wrench is versatile and durable with its 1/2 inch drive and ability to produce 425 feet pounds of torque at a maximum of 7,500 rotations per minute. Features a powerful twin hammer clutch, which is the most durable option with less vibration. Designed with an ergonomic handle and additional rubber anti-slip grip to ensure secure handling. Additional safety features include a forward facing exhaust system that shoots exhausted air away from the user and a built-in reverse switch and 5 setting power regulator to control the exact amount of air needed to get the job done. Also included with the gun is a 1/4" MNPT Plug connector to easily connect and disconnect from air hoses.

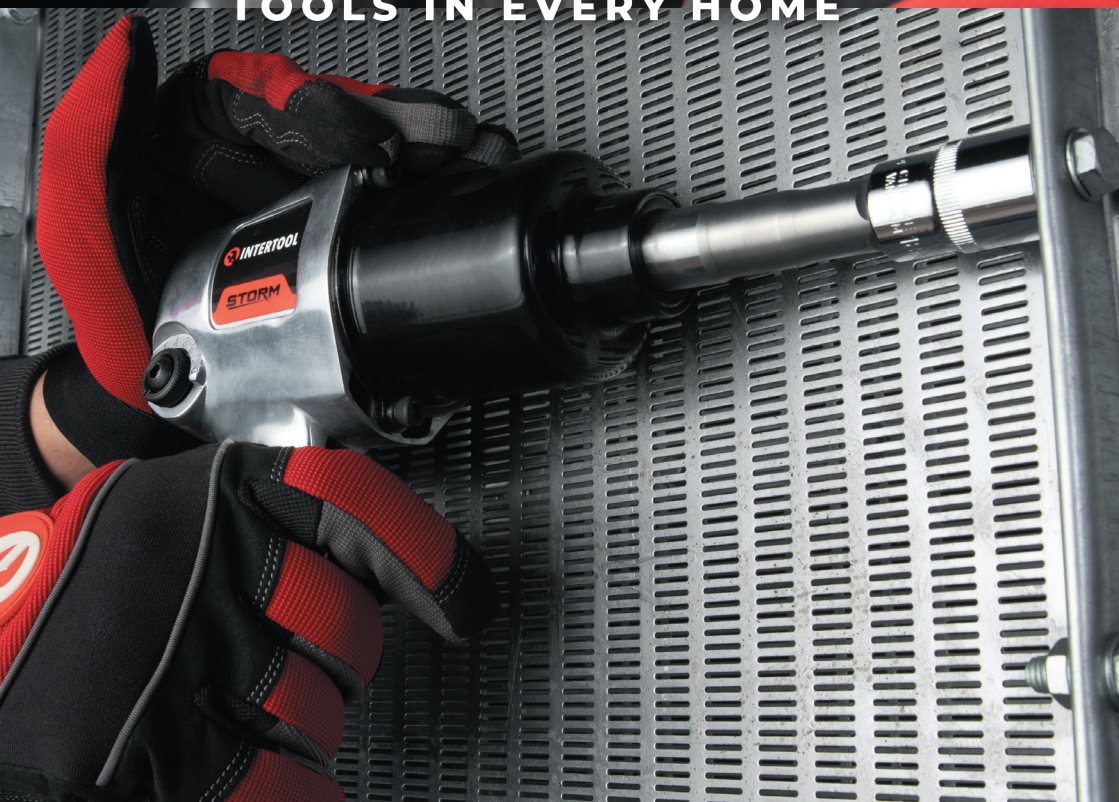
Specifications:

- Power Type: **Air**
- Max RPM: **7,500**
- Max. Torque: **425 ft/lbs**
- Drive Size: **1/2 inch**
- Anvil Length: **3 inches**
- Clutch Type: **Twin Hammer**
- Dimensions: **9.5" x 2.5" x 7.5"**
- Impact Wrench (only) Weight: **5.90 lbs**
- Total Weight: **6.55 lbs**





TOOLS IN EVERY HOME



BRAD NAILER | PT08-1603



Lubricating Oil, Hex Keys, Spare O-Rings, Spare Drive Pin



Ergonomic Trigger

Feels Natural in Hand

Safety Fire Tip

Prevents Accidental Firing

Spring-Loaded 100 Nail Magazine Capacity

Holds 18 Gauge Brad Nails up to 2" Long



Full Metal Body with Non-Slip Handle

Increases Tool Durability. Weighs 2.6 lbs

	1.2 mm
50 mm	2"
45 mm	1-3/4"
40 mm	1-9/16"
38 mm	1-1/2"
32 mm	1-1/4"
30 mm	1-3/16"
25 mm	1"
20 mm	3/4"
15 mm	5/8"

1/4" I/M Plug

For Easy Air Hose Connection. Up to 110 PSI

Description

Precision nailer great for installing trim and more. Features a contact trigger to continuously fire nails without having to re-pull the trigger, and increases safety avoiding misfiring when the tip is not in contact with the workpiece. This small, lightweight nailer uses brad nails or brads which are 18-GA nails with lengths 5/8" (16mm) - 2" (51mm) long. These nails are finer with a small head so they remain hidden when nailed into the objective and are less likely to cause wood to split. Metal body and air power offers more power for longer usage time and is lighter as it does not require a heavy battery to be attached. This nail gun works with a PSI between 70 and 110. Features a 1/4" air inlet and an exhaust system that safely directs exhausted air away from the user. Easy-load cartridge has a 100 nail capacity giving the user plenty to work with before needing to reload. At just 2.6 pounds, this nailer is lightweight and easy to handle. Extra accessory parts are included such as a portable storage hard case to house all parts for on the go convenience, lubricator to keep the gun running efficiently, hex keys for quick repairs, and extra O-rings and drive pin to replace damaged parts.

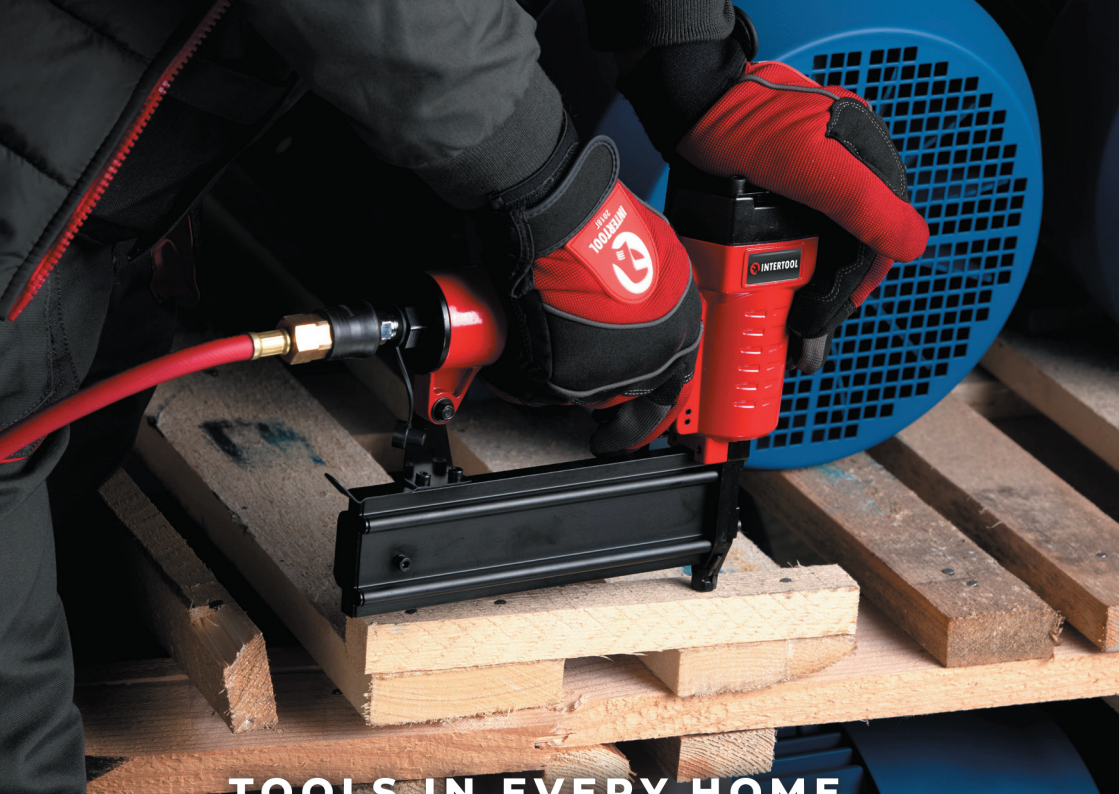
Specifications:

- Power Type: **Air**
- Nail Size: **18 gauge (5/8" up to 2" long)**
- Max PSI: **110**
- Air Inlet Size: **1/4"**
- Magazine Capacity: **100 nails**
- Nailer (only) Weight: **2.60 lbs**

Includes:

- Portable storage case
- Manual
- Lubricating oil
- Hex keys
- Replacement O-rings
- Replacement drive pin





TOOLS IN EVERY HOME



FINE WIRE STAPLER

| PT08-1610



Lubricating Oil, Hex Keys, Spare O-Rings, Spare Drive Pin



Ergonomic Trigger with Safety Pin

Prevents Accidental Firing

Spring-Loaded 100 Staple Magazine Capacity

Holds 21 Gauge 80 Series Staples up to 5/8" Long

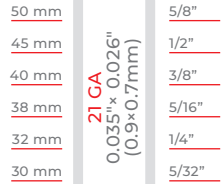
Easy Open Magazine Latch

For Quick Reloading of Staples

Full Metal Body with Non-Slip Handle

Increases Tool Durability. Weighs 1.9 lbs

1/2" (12.8mm)



1/4" I/M Plug

For Easy Air Hose Connection. Up to 110 PSI



Description

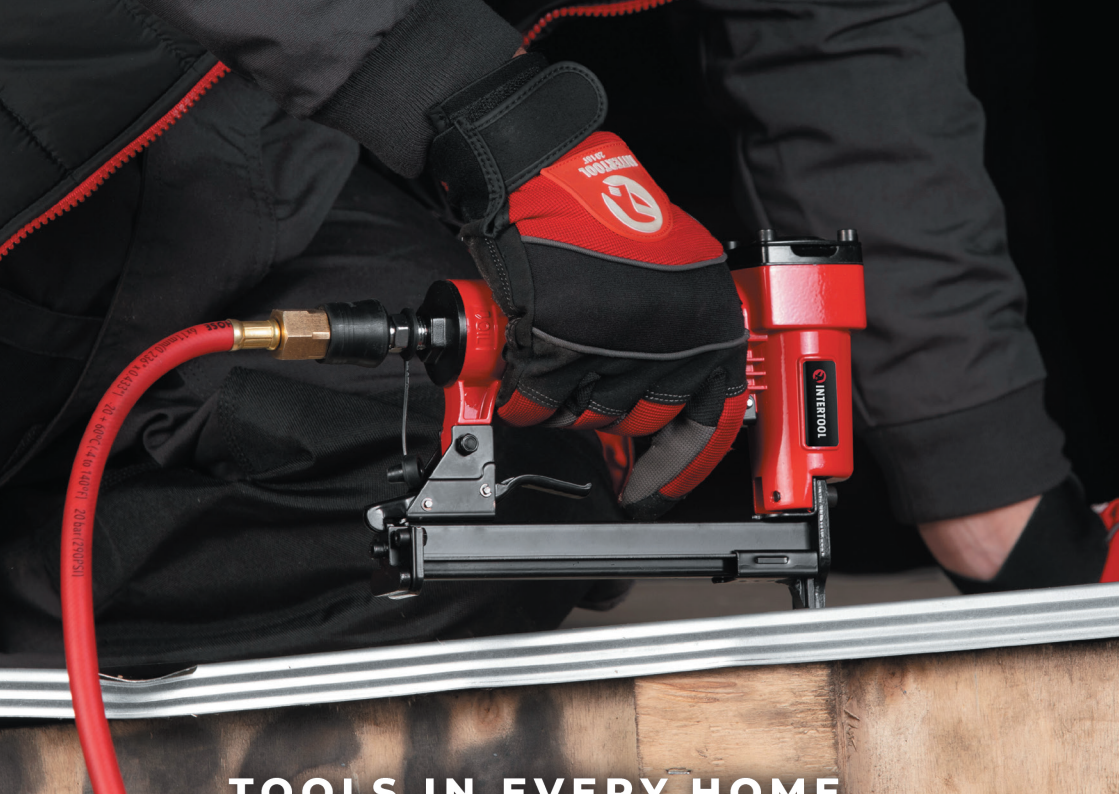
Ideal for light wood work, vinyl, fabric, wood trim, picture frames, furniture upholstery, molding, and more. This stapler works with 21 ga. 8016 fine wire staples with a 1/2 inch (12.8mm) wide crown and with lengths 5/32" (4mm) - 5/8" (16mm) long. The thinner staples are great for finishing as they remain concealed and subtle when stapled. Operates at a maximum of 110 PSI with a 1/4 inch air inlet and an exhaust system that safely directs air away from the user. The magazine has a 100 staple capacity giving the user plenty to work with before needing to reload and a quick release latch to swiftly refill or unjam stuck staples. At just 1.9 pounds, this stapler is easy to handle with less fatigue. Extra accessory parts are included such as a portable storage hard case that houses all parts for on the go convenience, lubricant to keep the gun running efficiently, hex keys for quick repairs, and extra O-rings and drive pin to replace damaged parts.

Specifications:

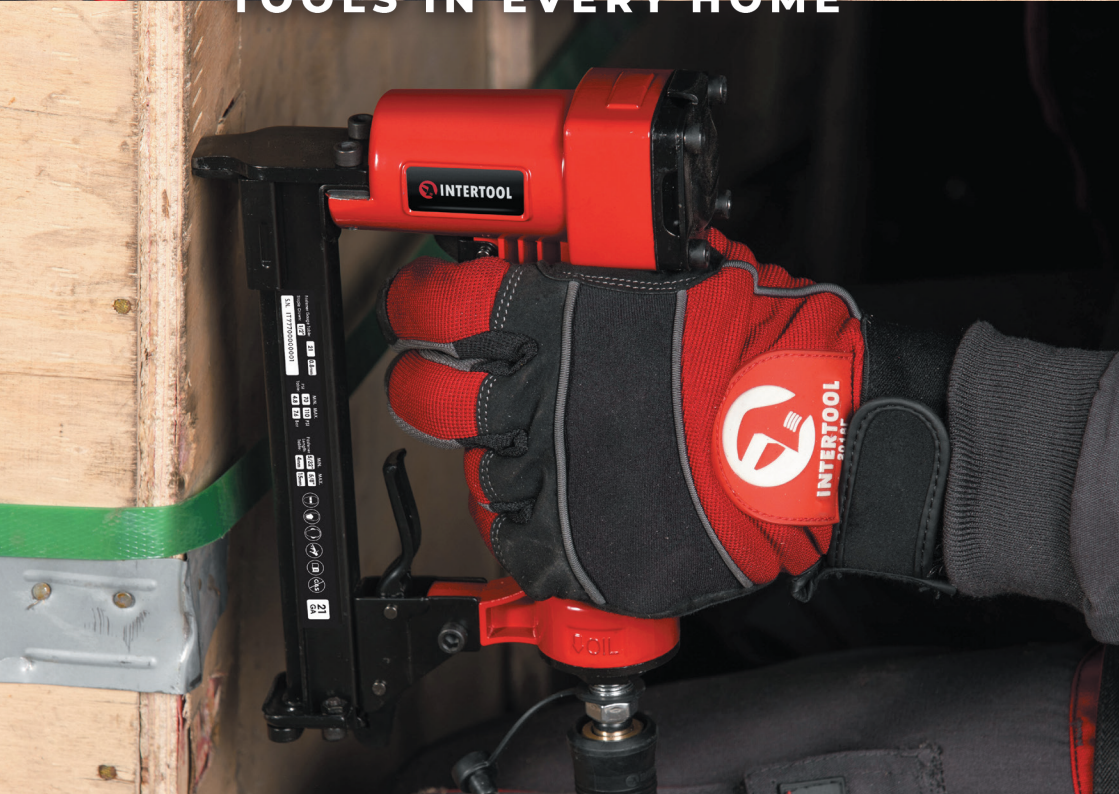
- Power Type: **Air**
- Nail Size: **21 gauge; 1/2" crown (5/32" up to 5/8" long)**
- Max PSI: **110**
- Air Inlet Size: **1/4"**
- Magazine Capacity: **100 staples**
- Stapler (only) Weight: **1.90 lbs**
- Total Weight: **2.90 lbs**

Includes:

- Portable storage case
- Manual
- Lubricating oil
- Hex keys
- Replacement O-rings
- Replacement drive pin



TOOLS IN EVERY HOME



STORM

Professional Line

HIGH PERFORMANCE POLYURETHANE RECOIL, RUBBER, & HYBRID AIR HOSES

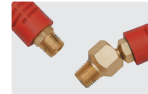


RECOIL AIR HOSES

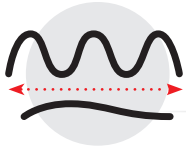
STORM
Professional Line



Thick Reinforced Lining Supports Up To 220 PSI
Oil and UV Resistant



1/4" NPT Brass Ends



Self Coiling

Made with 100% Pure Polyurethane

Bend Restrictors



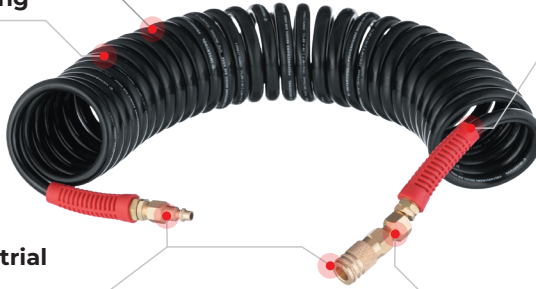
360° Swivel

Prevents Twists and Kinks
Greater Mobility - Decreases Wrist Tension



Solid Brass Industrial I/M Fittings

Impact and Corrosion Resistant



SKU

LENGTH (FEET)

ID (INCH)

PT08-1707

25

1/4 LITE (5.5mm)

PT08-1708

50

1/4 LITE (5.5mm)

PT08-1711

25

1/4

PT08-1712

50

1/4

PT08-1716

25

3/8 LITE (5/16)

PT08-1717

50

3/8 LITE (5/16)

Description

Lightweight Polyurethane, self coiling air hose built to fully function in cold temperatures as low as 14 degrees Fahrenheit. Reinforced lining handles up to a maximum 220 PSI and avoids abrasion, wear, oil, and grease. Smooth hose surface prevents damage of delicate surfaces like painted walls and trim, wood flooring, and laminates. Highly flexible with persistent recoil memory avoiding the need to coil the hose when finished and allowing for ease of use in cluttered or tight spaces. Does not tangle or kink. Coils up compactly and is easy to store. Included Impact resistant solid brass I/M industrial quick coupler and plug allow for easy connection to pneumatic tools and compressors. One end features a 360 degree rotating ball joint for greater mobility, reduced user fatigue, and guarantees a stable air flow connection to the compressor. The fittings, out of box, are loose for easy removal. Application of Thread Seal Tape before use is highly recommended. Tighten or remove fittings with a wrench. Bend restrictors on both ends prevent damage and stress near the coupler and plug.

Specifications:

- Hose Material: **100% Pure Polyurethane**
- Ends Material: **Brass**
- Fitting Material: **Brass**
- End Threads: **1/4" NPT**
- Max PSI: **220**

RUBBER AIR HOSES

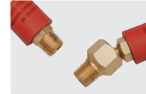
STORM
Professional Line

Lightweight Anti-Kink Rubber Air Hose

Keeps Its Soft Form
at Extreme Temperatures



Thick Reinforced Lining Supports Up To 220 PSI
Oil and UV Resistant



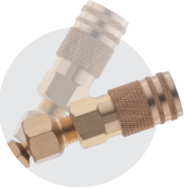
1/4" NPT Brass Ends

Bend Restrictors



Solid Brass Industrial I/M Fittings

Impact and Corrosion Resistant



360° Swivel

Prevents Twists and Kinks
Greater Mobility - Decreases Wrist Tension



SKU

LENGTH (FEET)

ID (INCH)

SKU	LENGTH (FEET)	ID (INCH)
PT08 - 1720	25	1/4
PT08 - 1721	50	1/4
PT08 - 1730	100	1/4
PT08 - 1731	25	3/8 LITE (5/16)
PT08 - 1732	50	3/8 LITE (5/16)
PT08 - 1733	100	3/8 LITE (5/16)
PT08 - 1734	25	3/8
PT08 - 1735	50	3/8
PT08 - 1736	100	3/8

Description

Heavy duty, 3 layer rubber air hose reinforced with high tenacity polyester fiber to remain flexible all year round with working temperatures of -22 to 140 degrees Fahrenheit. Max working pressure 290 PSI. Resists kinks, snags, bubbling, abrasions, punctures, chemicals, oil, and grease. Lays flat without memory making this easy to coil, and avoids kinks. Solid brass industrial I/M quick coupler and plug for easy connection to pneumatic tools and compressors. Features a 360 degree rotating ball joint connector for greater mobility, reduced user fatigue, and guarantees a stable air flow connection. The fittings, out of box, are loose for easy removal. Application of Thread Seal Tape before use is highly recommended. Tighten or remove fittings with a wrench. Bend restrictors on both ends prevent damage and stress near the coupler and plug.

Specifications:

- Hose Material: **Rubber**
- Fitting Material: **Brass**
- Ends Material: **Brass**
- End Threads: **1/4" NPT**
- Max PSI: **290**



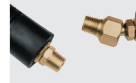
HYBRID AIR HOSES

STORM
Professional Line



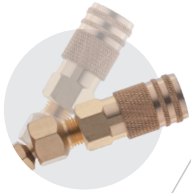
Thick Reinforced Lining Supports Up To 220 PSI

Oil and UV Resistant



1/4" NPT Brass Ends

Lightweight PVC + Rubber Composite



360° Swivel

Prevents Twists and Kinks
Greater Mobility - Decreases Wrist Tension



Bend Restrictors



Solid Brass Industrial I/M Fittings

Impact and Corrosion Resistant

SKU	LENGTH (FEET)	ID (INCH)
PT08 - 1761	25	1/4
PT08 - 1762	50	1/4
PT08 - 1763	100	1/4
PT08 - 1771	25	3/8 LITE (5/16)
PT08 - 1772	50	3/8 LITE (5/16)
PT08 - 1773	100	3/8 LITE (5/16)
PT08 - 1781	25	3/8
PT08 - 1782	50	3/8
PT08 - 1783	100	3/8

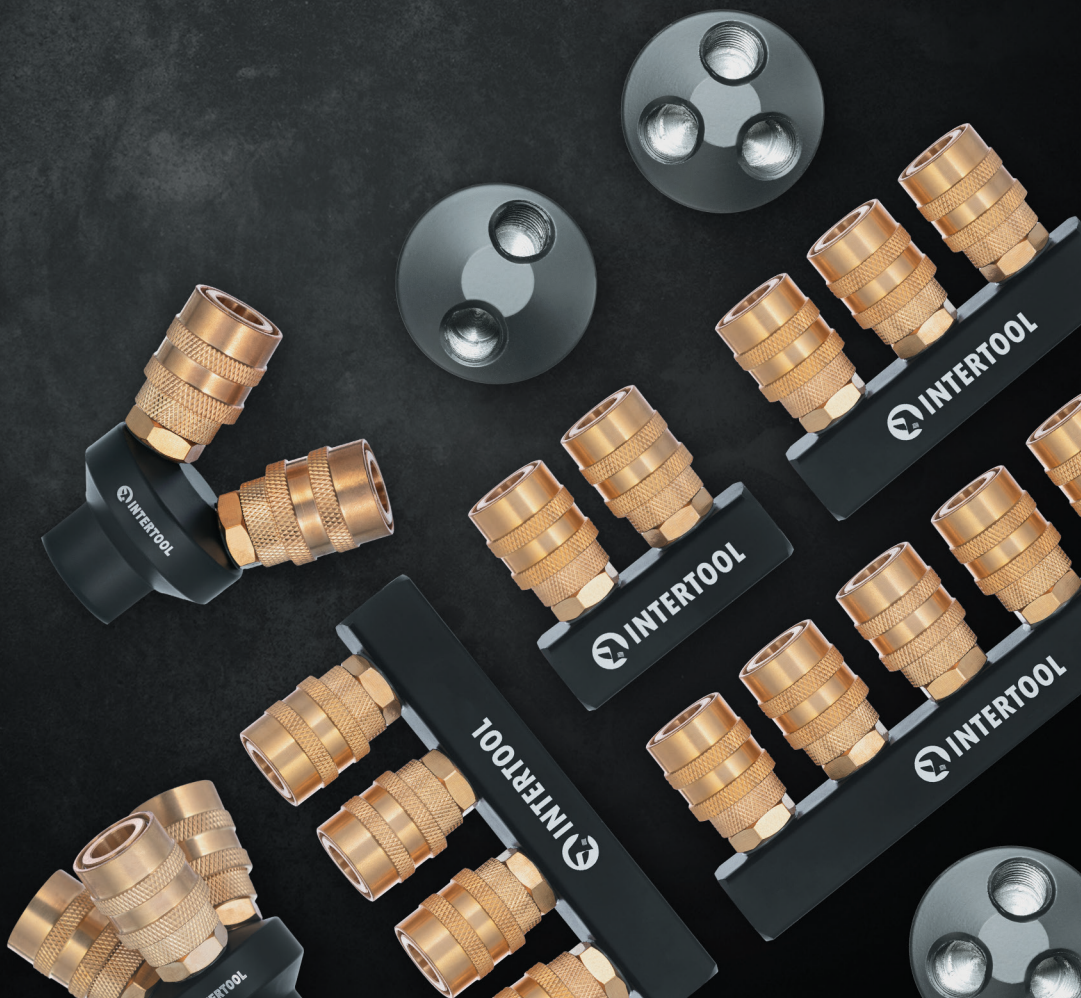
Description

Heavy duty hybrid air hose made of polyurethane and rubber making this hose much lighter than traditional rubber hoses. Great for ladder work and general purpose use. 3 layer reinforced with high tenacity polyester fiber to remain flexible all year round with working temperatures of -4 to 140 degrees Fahrenheit. Max working pressure 290 PSI. Resists kinks, snags, bubbling, abrasions, punctures, chemicals, oil, and grease. Lays flat with minimal memory allowing for easy coiling. Difficult to kink and tangle. Solid brass industrial I/M quick coupler and plug for easy connection to pneumatic tools and compressors. Features a 360 degree rotating ball joint connector for greater mobility, reduced user fatigue, and guarantees a stable air flow connection. The fittings, out of box, are loose for easy removal. Application of Thread Seal Tape before use is highly recommended. Tighten or remove fittings with a wrench. Bend restrictors on both ends prevent damage and stress near the coupler and plug.

Specifications:

- Hose Material: **Polyurethane, PVC and Rubber**
- Fitting Material: **Brass**
- Ends Material: **Brass**
- End Threads: **1/4" NPT**
- Max PSI: **290**

AIR SPLITTERS WITH BRASS QUICK COUPLERS



Air Splitters

With Brass Quick Couplers

PT08-1850 / PT08-1851 / PT08-1852 / PT08-1853
PT08-1854 / PT08-1855 / PT08-1856 / PT08-1857

Air splitters allow for the connection of several air tools at the same time to build a powerful pneumatic system with a max working pressure of 290 PSI. Each air splitter has 1/4" threads suitable for a customizable setup of different connectors. Reliable brass couplers allow for quick and easy connection of high pressure air hoses to pneumatic tools.

FEATURES:

- Convenient connection of multiple air tools to the air supply
- Simple, reliable, and impact resistant construction
- Quick couplers are Industrial style, which are the arguably most common in the USA
- Couplers are equipped with a brass core that significantly increases the service life of the connector, and remains air-tight even with heavy wear



Straight Air Splitters



SKU	THREAD	PORT COUNT
PT08-1854	1/4"	2



SKU	THREAD	PORT COUNT
PT08-1855	1/4"	3



SKU	THREAD	PORT COUNT
PT08-1856	1/4"	4



SKU	THREAD	PORT COUNT
PT08-1857	1/4"	5

Dual-Port Round Splitters

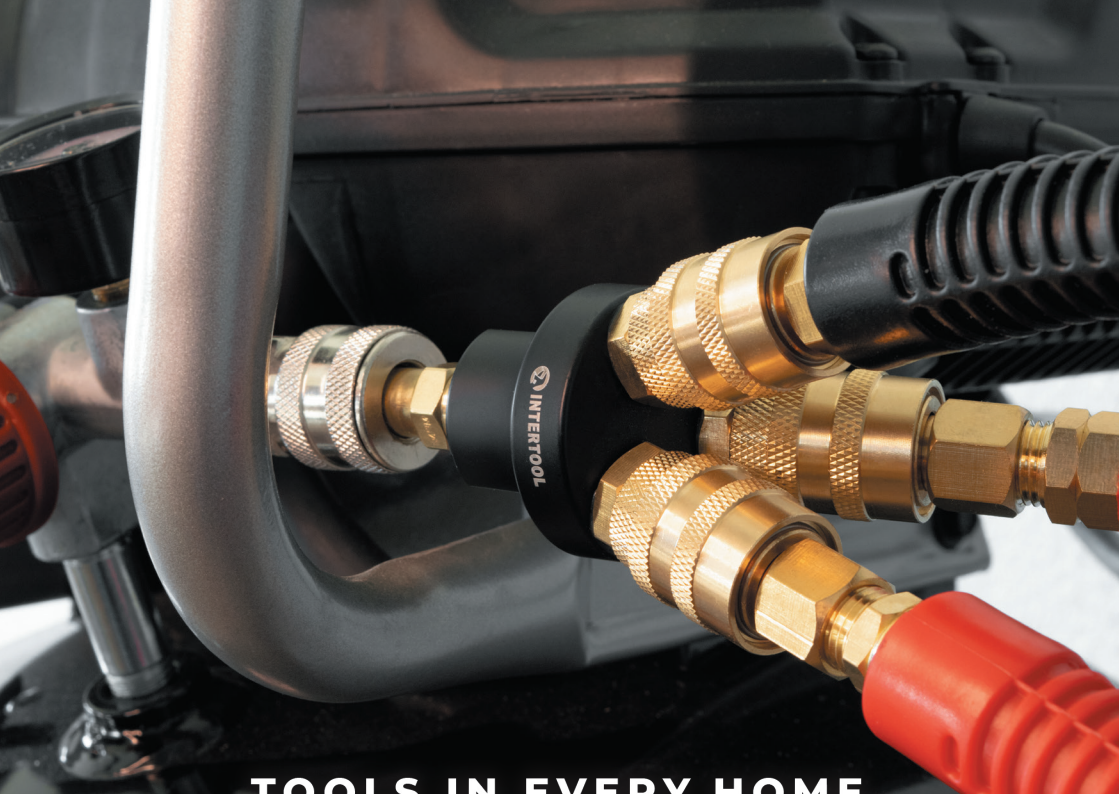


SKU	THREAD	PORT
PT08-1850	1/4"	1/4" x 2
PT08-1852	1/4"	Brass Quick Coupler x2

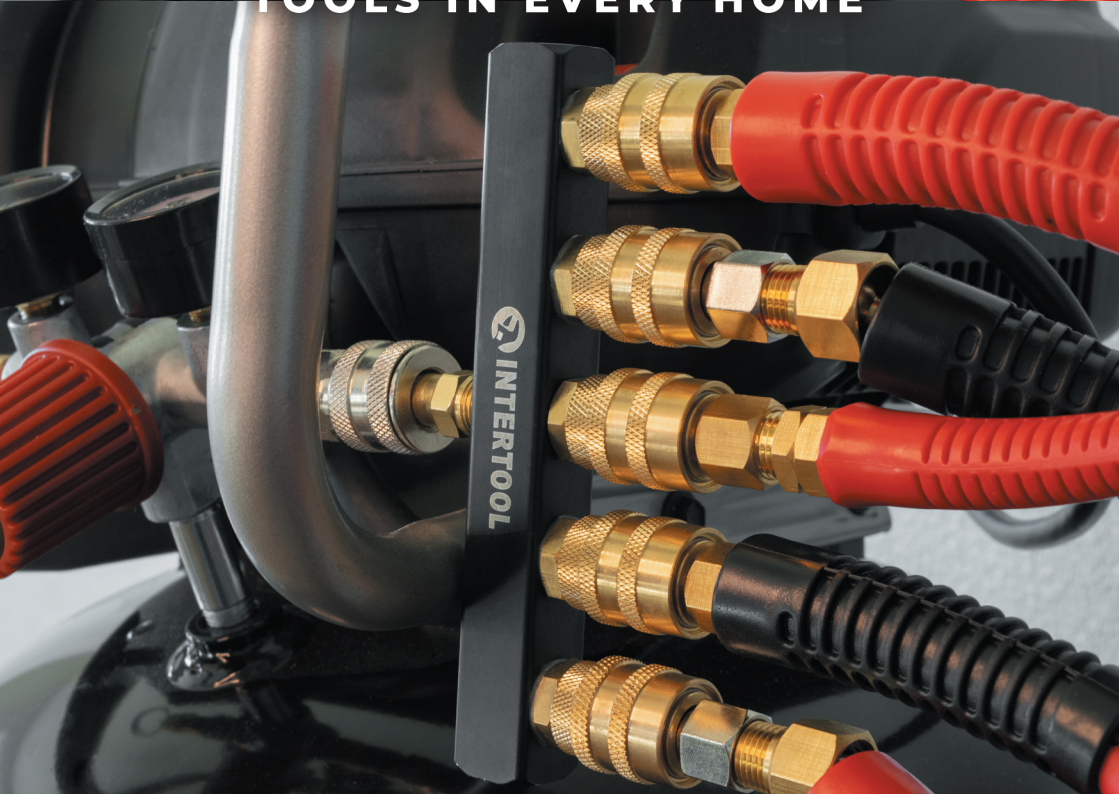
Three-Port Round Splitters



SKU	THREAD	PORT
PT08-1851	1/4"	1/4" x 3
PT08-1853	1/4"	Brass Quick Coupler x3

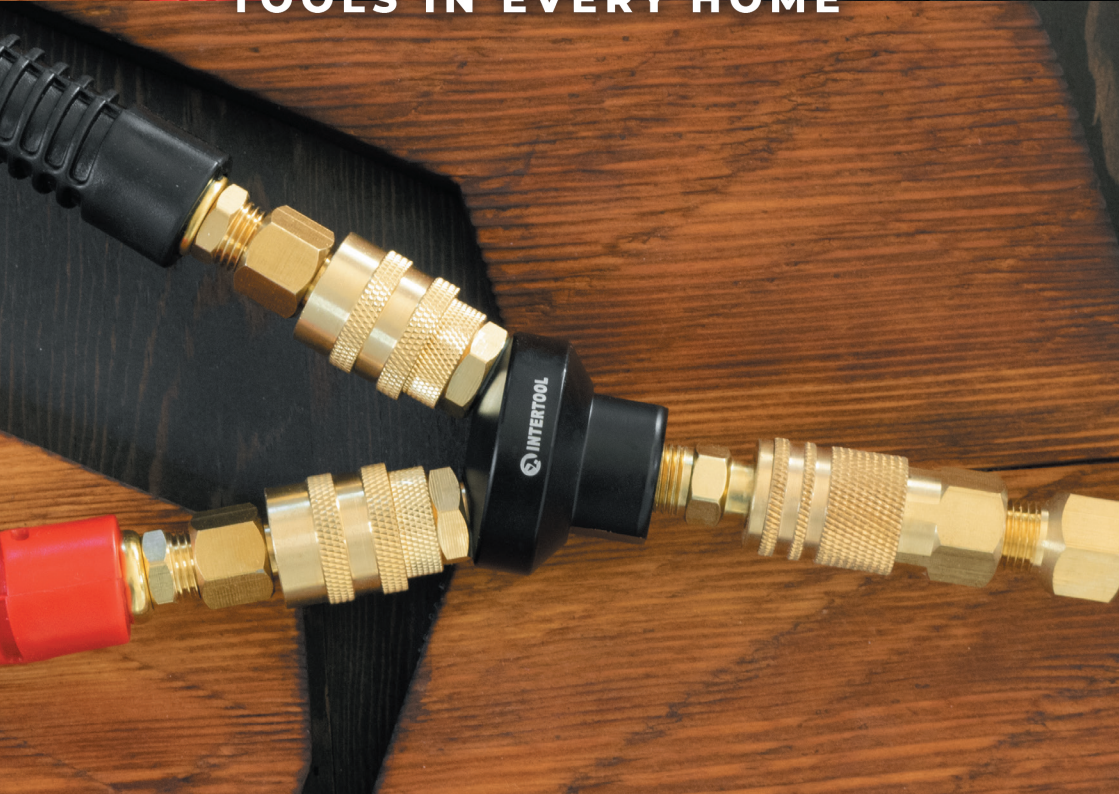


TOOLS IN EVERY HOME





TOOLS IN EVERY HOME





PNEUMATIC PAINT SPRAYERS & ACCESSORIES



PROFESSIONAL HVLP PAINT SPRAYERS BLACK M-DIAMOND SERIES

PT08-0163 / PT08-0164 / PT08-0168

STORM

The **Black M-Diamond Series** is a next generation design for the highest quality results with automotive, woodwork, and home improvement paint jobs. Built with high grade materials for a precise and consistent finish with thinned latex, varnishes and stains, metallics and non-metallics, lacquers, base coats, clear coats, single stage enamels, finishing fillers, waterborne and polyester primers, and more.



HVLP Technology uses a higher air volume and lower pressure to produce a fine spray pattern that can cover larger areas faster. Precision nozzles and the reduction of air pressure (optimal working pressure **29 psi (2 bar)**) increases the material transfer efficiency to the paint surface, which reduces wasted material and booth fog.

29 psi

Working Pressure

43 psi

Maximum Working Pressure

7 in

Recommended Distance to Paint Surface

10-12 in

Spray Pattern Width

10-12 CFM

Air Consumption



20oz (600cc)
Paint Cup

Fan Pattern
Control

Fluid Volume
Control

Air Supply
Control

Adjustable nozzles for horizontal and vertical spraying. Fan pattern control knob allows flat or oval spray patterns. A spray pattern width of **10 - 12 inches** creates an ideal dense pattern, ensuring uniform spray particles at an optimal spray distance of **7 inches** from the paint surface.

Features

- Designed for a professional performance
- Atomization System - **HVLP**
- Flat and Oval Spray Pattern
- Easy to Clean Gun Body
- Balanced Center of Gravity
- Smooth and Accurate Adjustment Mechanisms



The Black M-Diamond Series includes 3 models of paint sprayers with different nozzle sizes: 1.3mm, 1.4mm, and 1.8mm. **3 year warranty!**



Model	PT08-0163	PT08-0164	PT08-0168
Nozzle Size, MM	1.3	1.4	1.8

Additional nozzles and repair kit



PT08-2613

1.3 mm Nozzle, Air Cap, and Needle for Black M-Diamond Spray Guns



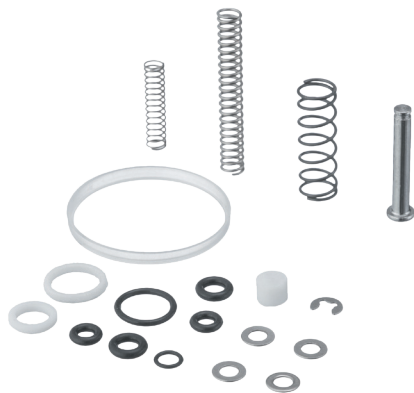
PT08-2614

1.4 mm Nozzle, Air Cap, and Needle for Black M-Diamond Spray Guns



PT08-2618

1.8 mm Nozzle, Air Cap, and Needle for Black M-Diamond Spray Guns



PT08-2600

Repair Kit

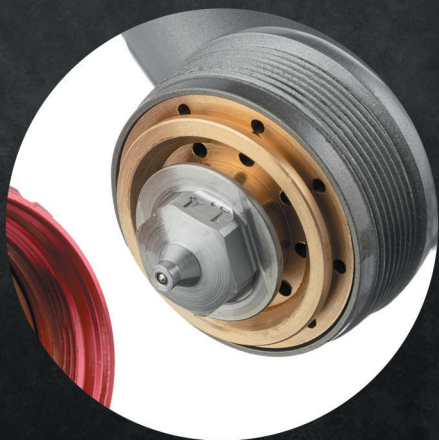
PROFESSIONAL LVLP TEFLON PAINT SPRAYERS

PT08-0143 / PT08-0144 / PT08-0148

A new generation of paint sprayers is featured in the **INTERTOOL LVLP** Teflon Series.

These **LVLP** paint sprayers are designed for precision automotive, woodwork, and home improvement paint jobs. Built with high grade materials for a precise and consistent finish with thin viscosity materials like base coats, clear coats, thin stains, lacquers, single stage enamels, and oil or water-based mediums.

Body is coated with **TEFLON (PTFE)** for quick and easy cleaning



LVLP technology performs at a lower paint volume at low pressure for precise and smooth finishes, making this sprayer great for detailing. Precision nozzles with reduced volume and pressure (working pressure: **21 psi (1.5 bar)**) maximizes material transfer efficiency up to **92%**, which greatly reduces wasted overspray and booth fog. Can be used with smaller air compressors.

10 in

Fan Pattern Width

21 psi

Working Pressure

36 psi

Maximum Working Pressure

8 in

Recommended Distance to Paint Surface

9-11 CFM

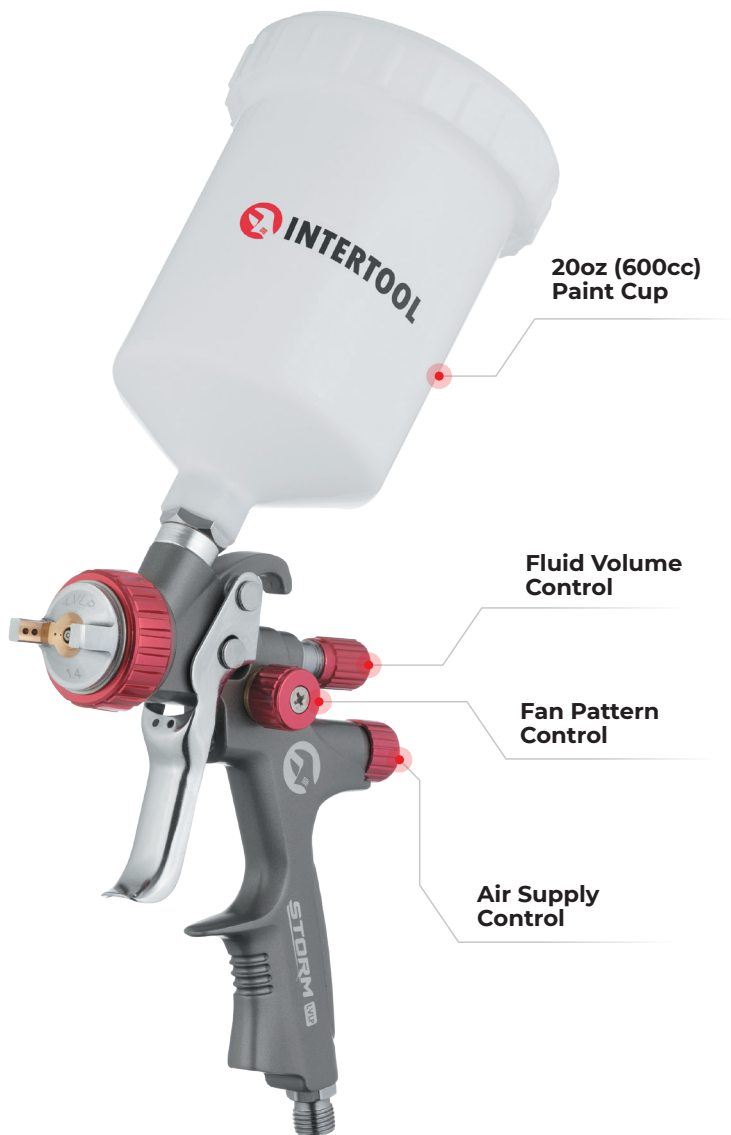
Air Consumption

1.2 lbs

Gun Weight with Empty Cup

92%

Material Transfer Efficiency to Paint Surface



Advantages



Durable TEFLON Coated Body

Non-stick coating resists curing of lacquers, solvent damage, and corrosion. Most notably, this material allows for easy cleaning, resistance to high and low temperatures, and wear resistance.



Smooth Control Knobs

Easily and accurately adjust air supply, paint volume, width and shape of fan pattern for quality results on the paint surface



Ergonomic Handle

Designed to fit perfectly in hand to create maximum comfort during long work durations. Provides a balanced and secure grip to minimize hand strain while spraying or adjusting spray positions. Work longer without unnecessary fatigue.



Adjustable Precision Nozzles

High quality stainless steel needle and nozzle with brass end cap ensures top performance atomization and lifetime durability. Simply turn the nozzle for a horizontal or vertical spray pattern.



Model

PT08-0143

PT08-0144

PT08-0148

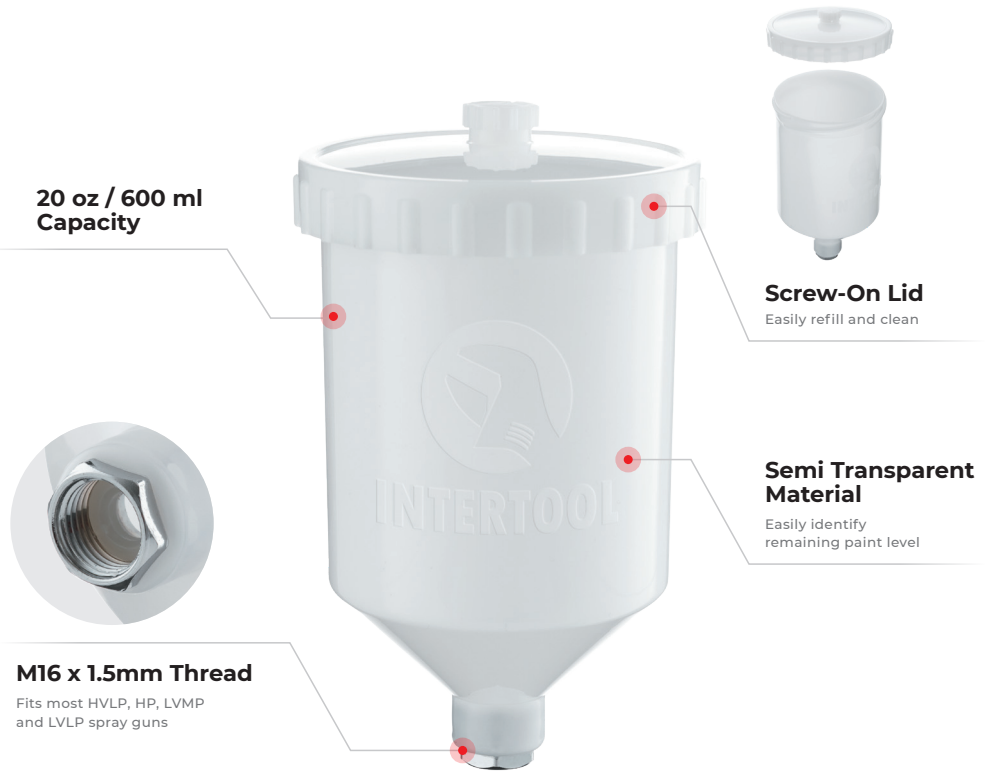
Nozzle Size, MM

1.3

1.4

1.8

PAINT CUP | PT08-1901



Description

Compatible with all **INTERTOOL HVLP** (Black M-Diamond) and **LVLP** spray guns as well as all standard sized spray guns with **M16 x 1.5mm** threading. This gravity feed paint cup holds **20 oz (600 ml / 600 cc)**. The plastic composition is durable, solvent resistant, and easy to clean. The material is semi-transparent for easy identification of remaining paint. Easily clean and refill with the simple screw-top cap.

Specifications:

Material: **Semi-transparent plastic**

Capacity: **20oz / 600mL / 600cc**

Thread Compatibility: **M16 x 1.5mm**



INTERTOOL
Tools in Every Home

PARTS ORGANIZERS



Organizers

BX08-4013 / BX08-4015 / BX08-4016 / BX08-4019 / BX08-4024



BX08-4013

ORGANIZER



Small Compartments

30

Large Compartments

9

BX08-4019

ORGANIZER



Large Compartments

18

INTERTOOL Organizers are designed for compact storage of small tools, hardware, and other items. Decrease clutter, maintain order, and free up useful space in any workshop, garage, or utility room.

Constructed from durable plastic, the case provides protection against chips and cracks, while its form allows for the organizer to be placed on a tabletop or hung from a wall.

The clear compartments help avoid confusion when looking for a specific tool. Each compartment comes with removable partitions to make item storage more convenient and customizable.



BX08-4016

ORGANIZER



Small Compartments

60

BX08-4015

ORGANIZER



Small Compartments

30

9 large bin compartments with semi-open ends made of a stronger, non-transparent plastic. The front of the bins have an insert for labeling

BX08-4024

ORGANIZER



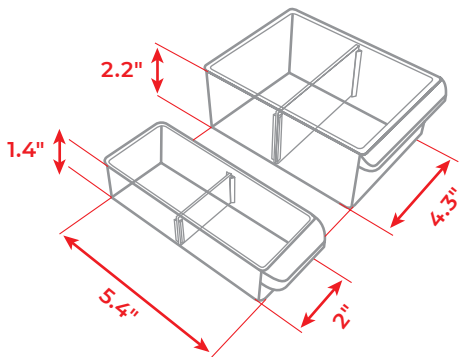
Small Compartments

8

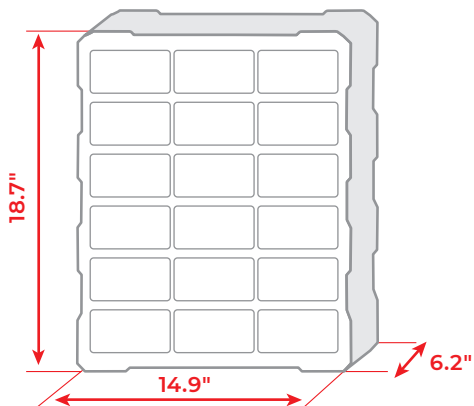
Large Compartments

4

ALL TRANSPARENT DRAWERS HAVE A REMOVABLE PARTITION IN THE MIDDLE



ORGANIZER DIMENSIONS



Carry Organizers



Get Your Space in Order with INTERTOOL Organizers

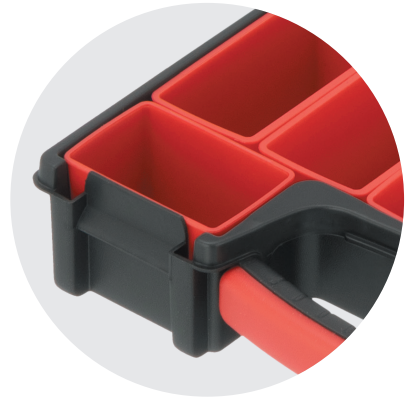
Maintain orderliness in your garage and home with these user-friendly and capacious organizers, suitable for storing and moving small items like fasteners, small tools, hardware, parts, fishing gear, and various other keepsakes.

Crafted from durable plastic, these organizers are equipped with compartments of varying sizes. The large and small trays can be removed for convenient access to the needed tool. Trays can also be interchanged and repositioned. Two locks securely clamp down the lid, ensuring that even small components remain in place.

The lid is constructed from sturdy polypropylene. Its transparent design allows for quick and easy identification of contents. The comfortable handle is reinforced and ergonomically shaped for easy transport.



Spacious organizers with
two reliable locks



Trays are designed to keep your
belongings secure and separate
from one another, especially
during transport



Trays are removable for the
most convenient access to
the item you need

Various size organizers!

BX08-4031

CARRY ORGANIZER



Diagonal
Measurement

12"

Number of
Sections / Trays

13

Dimensions
(Inches)

12.4 × 10.6 × 2.4

BX08-4032

CARRY ORGANIZER



Diagonal
Measurement

12"

Number of
Sections / Trays

7

Dimensions
(Inches)

12.4 × 10.6 × 4.3



Various size organizers!

BX08-4033

CARRY ORGANIZER



Diagonal Measurement 16"

Number of Sections / Trays 24

Dimensions (Inches) 16.3 × 13 × 2.4

BX08-4034

CARRY ORGANIZER



Diagonal Measurement 16"

Number of Sections / Trays 8

Dimensions (Inches) 16.3 × 13 × 4.3

Specialized Organizers



Water – Resistant Field Box

INTERTOOL **BX08-0290**

BX08-0290 field box is designed for storage and safe transportation of equipment, tools, electronics, hunting and fishing gear, as well as various types of equipment and other inventory that require dry storage conditions.

BX08-0290

WATER-RESISTANT FIELD BOX



Diagonal Measurement	11"
Dimensions (Inches)	11.4 x 7.5 x 5.5

Tough Lock

The lock design, featuring a strong steel latch in combination with a rubber seal, ensures a tight connection between the roof and the main container of the box. The container is protected against unauthorized opening and guarantees the complete safety of your belongings, especially when padlocks are placed on the compatible tabs.



Water – Resistant Field Box

INTERTOOL **BX08-0290**



Protect your Gear

Your belongings will be well-protected against water and dust, giving you peace of mind about their safety in rainy or humid conditions. The box is crafted from durable polypropylene material and features a sealing rubber gasket around its perimeter to provide complete content protection. The lightweight and easy-to-transport box is an excellent choice for outdoor activities and field conditions, allowing you to take it with you wherever you go. It's also ideal for storing inventory in basements, garages, and sheds.

Water – Resistant Field Box INTERTOOL **BX08-0290**



Convenience of use

The container handle is recessed, allowing for compact stacking of boxes in limited spaces. The handle has an ergonomic shape for comfortable carrying. The compact size of the entire box makes it an ideal storage solution for items in car trunks, attics, storage rooms, and more.



Organizers

BX08-4041 / BX08-4042 / BX08-4043

These organizers are designed for storing and transporting small items such as fasteners, hardware, spare parts, fishing gear, and other small items

BX08-4042

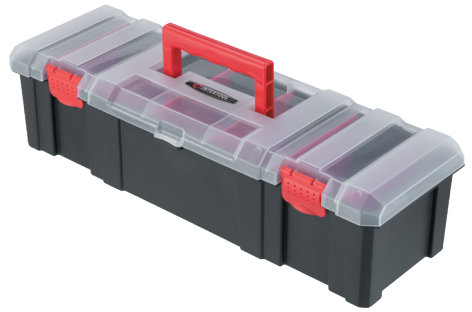
ORGANIZER



Diagonal Measurement	18"
Compartments	7
Removable Dividers	6
Dimensions (Inches)	12.4 × 10.6 × 2.4

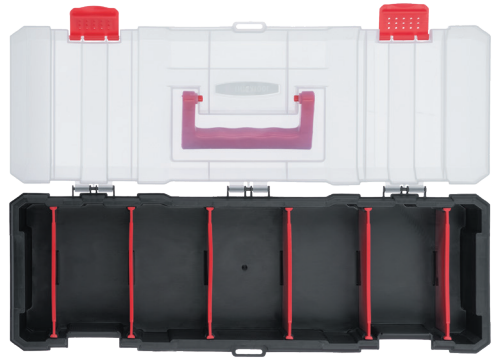
BX08-4043

ORGANIZER



Diagonal Measurement	18"
Compartments	7
Removable Dividers	6
Dimensions (Inches)	12.4 × 10.6 × 4.3





Main Storage Compartment

All organizers are made of strong, thick plastic. The locks securely press the lid and prevent even small items from spilling from one section to another. The lid is made of durable polypropylene that is resistant to chipping. The transparency of the lid helps quickly find the necessary items. The organizers have convenient handles for transportation.

Dividers

The **BX08-4042** and **BX08-4043** models have dividers installed inside, creating 7 sections for storing fasteners such as nuts, bolts, screws, washers, fishing accessories, and other small items. The dividers can be removed, allowing you to customize the size of the storage space.

BX08-4041

ORGANIZER



Diagonal
Measurement

12"

Number of
Sections / Trays

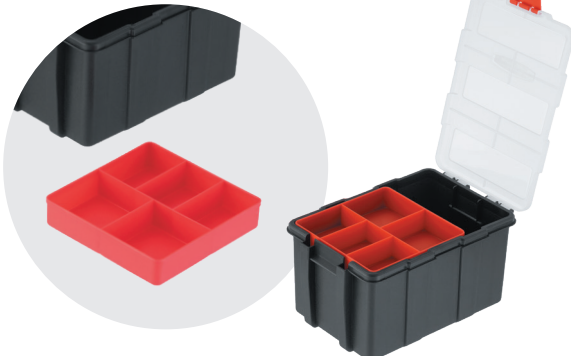
13

Dimensions
(Inches)

12.4 × 10.6 × 2.4

Tray

The **BX08-4041** model features a tray inside the container that can be removed and has five compartments for storing small parts and fasteners. The tray can also be shifted side to side, or removed to open up access to the main compartment of the organizer





INTERTOOL

Tools in Every Home

NEW ULTRA THIN AND LIGHTWEIGHT “BLACK SLIM” STEP LADDERS

Highly functional and fashionable for home, office, and workspace. Modern, lightweight design is compact for storing in tight spaces and sturdy when in open position to ensure maximum user safety. “Black Slim” STORM Professional Line

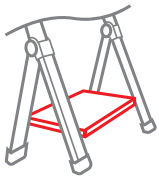
Step Ladders by INTERTOOL - 3 Year Warranty!





Incredibly stable with a load capacity of 330 lbs

Step ladders are made of heavy-duty, lightweight, and corrosion-resistant aluminum. Designed for a long service life and meets American **ANSI A14** and European **EN 12183** quality standards. Can hold up to 330 lbs.



**Wide and stable platform.
Comfortably stand and work
safely on it**

Wide pedals provide excellent user stability during climb and descent. The top step, or platform, is even wider at 10" for maximum user comfort when working at full height with full heel-to-toe support. Work freely and for longer durations without fatigue. All models include an extended safety handrail for lean support, increased space for standing at the top step, and as an object to grab onto for more stability.



Anti-slip steps and rubber ladder feet keep the user safe and prevents scratching of the floor

The surface of the steps are ribbed to prevent slipping, giving the user confidence while climbing and more stability when working. Rubber feet on all 4 ground contact points are anti-skid to grip the floor surface, preventing any shifting and ensuring a sturdy experience. The rubber material protects laminate, tile, wood, and other types of flooring from damage.



**Ultra thin when folded for
compact storage - 2.2 Inches.
Store anywhere**

Frame folds tightly and the steps swivel vertically for convenient storing. No more girthy ladders taking up too much space and needing storage away from where it is most needed. Folded dimensions allow for storing in tight spaces, in closets, behind doors, and in gaps.



Lightweight. Carry from place to place with one hand

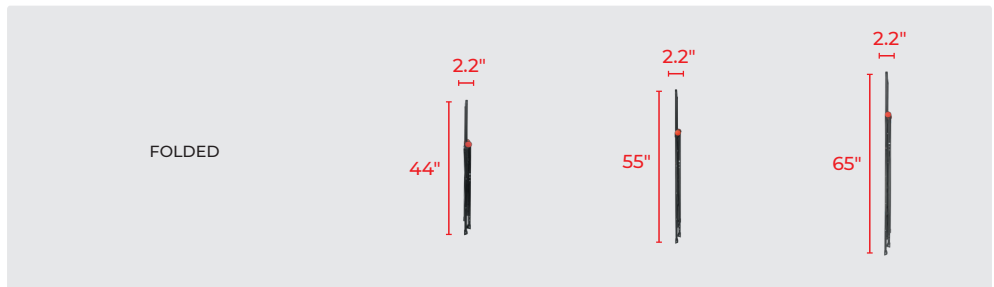
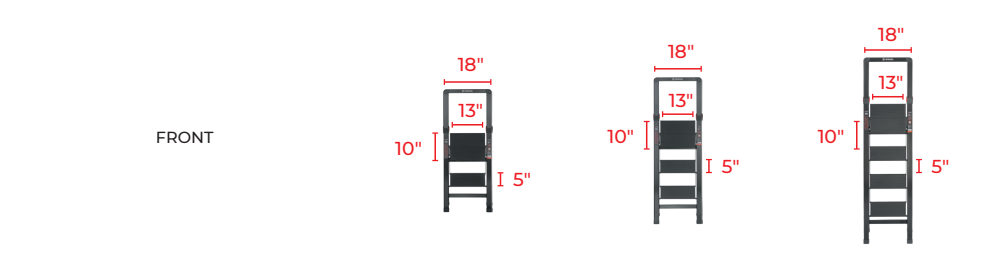
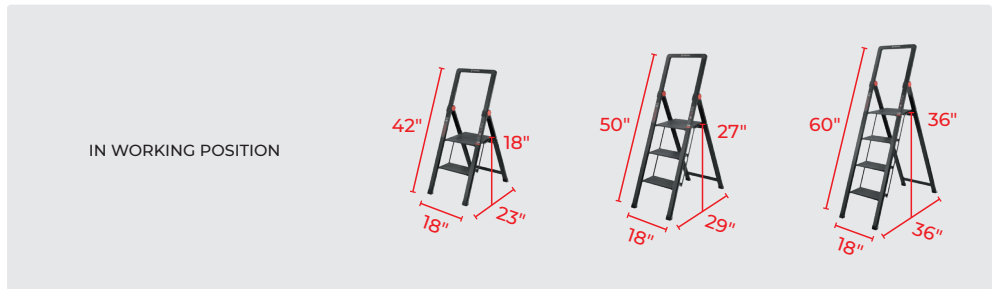
The ladders are lightweight and easy to move around with one hand thanks to its compact size. Fold and setup in working position with ease.



Choose the right size step ladder



PRODUCT ID	LT08-5002	LT08-5003	LT08-5004
STEPS	2	3	4
CLOSED LADDER DIMS (INCH)	44 × 18.3 × 2.2	55.6 × 18.3 × 2.2	65.5 × 18.3 × 2.2
WORKING LADDER DIMS (INCH)	41.7 × 18.3 × 22.8	50.7 × 18.3 × 29.5	59.6 × 18.3 × 36.3
HEIGHT OF TOP STEP (INCH)	18	27	36
PRODUCT WEIGHT (LBS)	10	12.6	15.2





NOTES

A series of horizontal dotted lines for writing notes.



NOTES

A series of horizontal dotted lines for writing notes.



NOTES

A series of horizontal dotted lines for writing notes.





CATALOG

2023

TOOLS IN
EVERY HOME



intertool.us

intertoolus@gmail.com